

OFFERTA PROMOZIONALE

Cytoskeleton Activation Assay Tools 15% off

➤ La Società Italiana Chimici, in qualità di Distributore della Cytoskeleton Inc. offre uno sconto del 15% su tutti i prodotti elencati nel link di seguito riportato:

Small G-Protein Tools



L'offerta promozionale è relativa alle seguenti categorie di prodotti:

- GEFs
- Small GTP
- Activation Activation Assays

Link all'elenco completo dei prodotti:

https://www.sichim.com/files/ugd/532628_cc090e9a3eff4a7e9149ac7c80949ee7.pdf

CONDIZIONI DI VENDITA:

Prezzi: al netto dell'IVA (22%)

Spese di Trasporto: € 10,00

Consegna: 10 giorni lavorativi dal ricevimento dell'ordine

Scadenza Offerta: fino al 30 Aprile 2024

Codice Offerta: CYTO2-2024

CONTATTARE:

Società Italiana Chimici

tel: +39 06 8818936 - 8800211

e-mail: offerte@sichim.com

Cytoskeleton's Activation Assays



The Most Cited, the Most Trusted



The Original G-LISAs
by **Cytoskeleton, Inc.**



Activation Assays

Cytoskeleton G-LISA® Small G-Protein Activation Assays

G-LISA Small GTPase Activation Assays offer a fast and sensitive method for measuring GTP-bound active small G-proteins. Cytoskeleton, Inc. was the original developer of these activation assay tools.

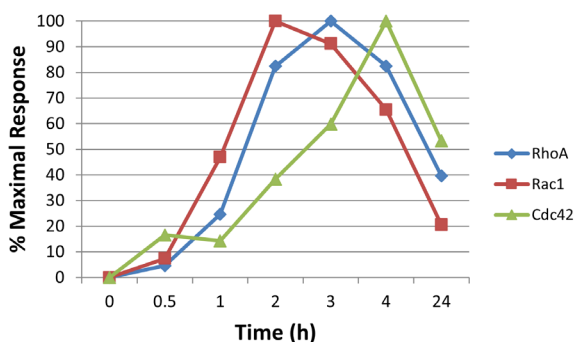
Advantages of G-LISA activation assays include:

- High Sensitivity and Accuracy
- Results in 3 Hours
- Flexible Format
- Small Amount of Material Required
- Compatible with Tissues and Cell Lysates
- Highly Cited Tools



Cytoskeleton has created in-depth FAQs, Tech-Tips, Protocol Videos, and Technical Guides to provide expert guidance when utilizing G-LISA® Activation Assays for the first time. Find them at the link below.

<https://www.cytoskeleton.com/activation-assays>



Swiss 3T3 fibroblasts were treated with 1 µg/ml CN04 for the indicated times and cell lysates were subjected to G-LISA activation assays for RhoA (Cat.# BK124), Rac1 (Cat.# BK128), and Cdc42 (Cat.# BK127).

Hundreds of Citations Available at Cytoskeleton.com!



G-LISA® Activation Assays

G-LISAs use a 96-well plate coated with effector protein that selectively binds the active GTPase followed by quantitation with ELISA techniques.

G-LISA Activation Assays	Cat. #	Amount
RhoA/Rac1/Cdc42 G-LISA Activation Assay Bundle BK135=BK124-S+BK127-S+BK128-S	BK135	3 Kits (24 assays/kit)
Cdc42 G-LISA® Activation Assay, colorimetric	BK127-S BK127	24 assays 96 assays
Rac1,2,3 G-LISA® Activation Assay, colorimetric	BK125	96 assays
Rac1 G-LISA® Activation Assay, colorimetric	BK128-S BK128	24 assays 96 assays
Rac1 G-LISA® Activation Assay, luminescence	BK126	96 assays
RalA G-LISA® Activation Assay, colorimetric	BK129	96 assays
Ras G-LISA® Activation Assay, colorimetric	BK131	96 assays
RhoA G-LISA® Activation Assay, colorimetric	BK124-S BK124	24 assays 96 assays
RhoA G-LISA® Activation Assay, luminescence	BK121	96 assays
Protease Inhibitor Cocktail (100x stock)	PIC02	1 ml

G-LISA® Product Citations

RhoA G-LISA® (Cat. # BK124)

Choraghe R. et al. *J Cell Sci.* 2020 Mar 2;133(5):jcs.236166. doi: 10.1242/jcs.236166

Rac1 G-LISA® (Cat. # BK128)

Woida P. et al. *Sci Signal.* 2020 Jan 14;13(614):eaaw9447. doi: 10.1126/scisignal.aaw9447.

Cdc42 G-LISA® (Cat. # BK127)

Zhang X. et al. *JCI Insight.* 2020 Aug 20;5(16):e135923. doi: 10.1172/jci.insight.135923.

Ras G-LISA® (Cat. # BK131)

Hofmann M. et al. *Cancer Discov.* 2020 Aug 19;CD-20-0142. doi: 10.1158/2159-8290.CD-20-0142.

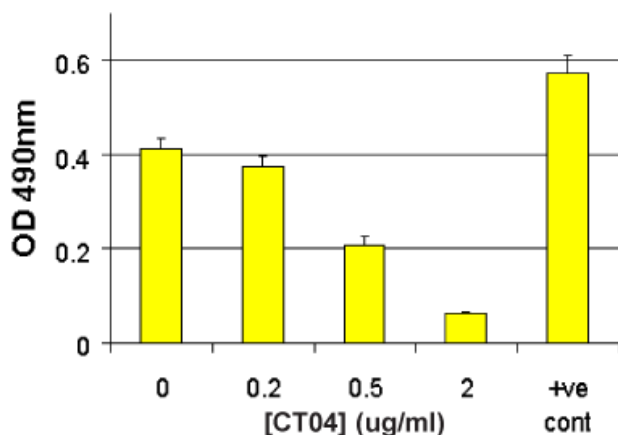
More online!

www.cytoskeleton.com/activation-assays



Cytoskeleton G-Switch Small G-Protein Inhibitors

The G-switch line of inhibitors are state of the art reagents for studying the effects of small G-proteins in your field of research. The Rho and Ras family of small G-proteins are important in cell motility, cell morphology, cell division, cell growth and proliferation.



Rho activity measured in Swiss 3T3 cells treated with the Cell Permeable Rho Inhibitor (CT04) using the RhoA G-LISA Activation Assay (Cat.# BK124). Serum starved Swiss 3T3 fibroblasts were untreated (no CT04) or treated with 0.20, 0.50 and 2.0 µg/ml of CT04 for 4h in serum free medium at 37°C, then activated with 100µg/ml calpeptin for 10min. Cells were then lysed and RhoA activity was measured by the RhoA G-LISA Activation Assay (Cat.# BK124). Note: At 2.0 µg/ml CT04 for 4h results in almost complete (90%) inhibition of RhoA activity.



Popular G-Switch Inhibitors	Cat. #	Amount
Rho Inhibitor I Specific inhibitor of Rho activity, ADP ribosylation of Rho Asn-41 (very cell permeable)	CT04-A	1 x 20 µg
	CT04-B	5 x 20 µg
	CT04-C	20 x 20 µg
C3 Transferase Protein Specific inhibitor of Rho activity, ADP ribosylation of Rho Asn-41 (limited cell permeability)	CT03-A	1 x 25 µg
	CT03-C	4 x 25 µg

Cytoskeleton Pull-down Activation Assays

Cytoskeleton offers Small G-Protein Pull-down Activation Assays. Cytoskeleton's Assays measure active forms of small g-proteins using a well-established approach without the need for any specialized equipment.



Pull-down Activation Assays

Pull-down assays utilize affinity beads linked to an effector protein that selectively binds active GTPase followed by quantitation with Western blotting.

Pull-down Activation Assays	Cat. #	Amount
Combo RhoA/Rac1/Cdc42 Activation Assay Biochem Kit™	BK030	3 x 10 assays
Arf1 Activation Assay Biochem Kit™	BK032-S	20 assays
Arf6 Activation Assay Biochem Kit™	BK033-S	20 assays
Cdc42 Activation Assay Biochem Kit™	BK034-S BK034	20 assays 50 assays
Rac1 Activation Assay Biochem Kit™	BK035-S BK035	20 assays 50 assays
RalA Activation Assay Biochem Kit™	BK040	50 assays
Ras Activation Assay Biochem Kit™	BK008-S BK008	20 assays 50 assays
RhoA Activation Assay Biochem Kit™	BK036-S BK036	20 assays 80 assays

Comparison of Pull-down and G-LISA formats

Parameter	Pull-down	G-LISA®
Total protein per assay	500-2000 µg	10-50 µg
Assay time	10-12 h (2 days)	<3 h
Primary cells & 3D matrix compatible	No	Yes
Sample handling	10 Samples	96 Samples
Quantitative data*	Semi	Yes

* Numerical readouts and fewer sample handling steps make G-LISA® assays more quantitative.

Distributed by:



Via Rio nell'Elba, 140 / 00138 Rome - ITALY
 Phone: +39 06-8818936/8800211
 Fax: +39 06-8815319
 Email: info@sichim.com
 Web-Site : www.sichim.com

Campaign 2 2024 Cytoskeleton

Small GTPases Activation Assays

Product List

CAT. NO.	PRODUCT	AMOUNT	Shipping Temp.	Storage on Arrival
ACD04	Anti-Cdc42 Mouse Monoclonal Antibody	1 x 500 µl	AT	4°C
ARC03	Anti-Rac1 specific mouse MAb	2 x 100 µl	AT	4°C
ARC03-S	Anti-Rac1 specific mouse MAb(sample size)	1 x 25 µl	AT	4°C
BK008	Ras Activation Assay Biochem Kit	KIT 50 assays	AT	4°C
BK008-S	Ras Activation Assay Biochem Kit	KIT 20 assays	AT	4°C
BK030	Combo RhoA/Rac1/Cdc42 Activation Assay Kit	KIT 3 x 10 assays	AT	4°C
BK032-S	Arf1 Pulldown Activation Assay Kit	KIT 20 assays	AT	4°C
BK033-S	Arf6 Pulldown Activation Assay Kit	KIT 20 assays	AT	4°C
BK034	Cdc42 Pulldown Activation Assay Kit	KIT 50 assays	AT	4°C
BK034-S	Cdc42 Pulldown Activation Assay Kit	KIT 20 assays	AT	4°C
BK035	Rac1 Pulldown Activation Assay Kit	KIT 50 assays	AT	4°C
BK035-S	Rac1 Pulldown Activation Assay Kit	KIT 20 assays	AT	4°C
BK036	RhoA Pulldown Activation Assay Kit	KIT 80 assays	AT	4°C
BK036-S	RhoA Pulldown Activation Assay Kit	KIT 20 assays	AT	4°C
BK040	RalA Activation Assay Biochem Kit	KIT 50 assays	AT	4°C
BK100	GEF Exchange Assay	KIT 60-300 assays	AT	4°C
BK105	GAP Assay Kit	KIT 80-160 assays	AT	4°C
BK121	RhoA G-LISA Activation Assay (luminescence)	KIT 96 assays	AT	4°C
BK124	RhoA G-LISA Activation Assay (absorbance)	KIT 96 assays	AT	4°C
BK124-S	RhoA G-LISA Activation Assay (absorbance)	KIT 24 assays	AT	4°C
BK124-XL	RhoA G-LISA Activation Assay (absorbance)	Large Quantities	AT	4°C
BK125	Rac1,2,3 G-LISA Activation Assay Kit	KIT 96 assays	AT	4°C
BK126	Rac1 G-LISA Activation Assay Kit	KIT 96 assays	AT	4°C
BK127	Cdc42 G-LISA Activation Assay Kit	KIT 96 assays	AT	4°C
BK127-S	Cdc42 G-LISA Activation Assay Kit	KIT 24 assays	AT	4°C
BK128	Rac1 G-LISA Activation Assay Kit	KIT 96 assays	AT	4°C
BK128-S	Rac1 G-LISA Activation Assay Kit	KIT 24 assays	AT	4°C
BK129	RalA G-LISA Activation Assay Kit	KIT 96 assays	AT	4°C
BK131	Ras G-LISA Activation Assay Kit	KIT 96 assays	AT	4°C
BK131-XL	Ras G-LISA Activation Assay Kit	Large Quantities	AT	4°C
BK135	G-LISA Bundle (BK135 = BK124-S + BK127-S + BK128-S)	3 KITS (24 assays/kit)	AT	4°C
BK150	RhoA ELISA Kit	KIT 96 assays	AT	4°C
C17G01-A	Cdc42-GST protein: dominant negative	1 x 25 µg	AT	4°C
C6101-A	Cdc42-His Protein: constitutively active	1 x 10 µg	AT	4°C
CD01-A	Cdc42-His Protein: Wild type	1 x 100 µg	AT	4°C
CD01-C	Cdc42-His Protein: Wild type	3 x 100 µg	AT	4°C
CD01-XL	Cdc42-His Protein: Wild type	1 x 1 mg	AT	4°C
CDG01-C	Cdc42-GST Protein: Wild type	8 x 25 µg	AT	4°C
CN01-A	Rho Activator	5 x 10 units	AT	4°C
CN01-B	Rho Activator	20 x 10 units	AT	4°C
CN02-A	Rac and Cdc42 Activator	5 x 10 units	AT	4°C
CN02-B	Rac and Cdc42 Activator	20 x 10 units	AT	4°C
CN03-A	Rho activator II	3 x 20 µg	AT	4°C
CN03-B	Rho activator II	9 x 20 µg	AT	4°C
CN03-XL	Rho activator II	Large Quantities	AT	4°C
CN04-A	Rho/Rac/Cdc42 Activator I	3 x 20 µg	AT	4°C
CN04-B	Rho/Rac/Cdc42 Activator I	9 x 20 µg	AT	4°C
CS-GE03	Ras-GRF GEF protein (human recomb. CDC25 domain, MBP tagged)	1 x 100 µg	AT	4°C
CS-GE04	Tiam1 GEF protein (human recomb. DHPH domain, MBP tagged)	1 x 100 µg	AT	4°C
CS-GE05	Vav1 GEF protein (human recomb. DHPHC1 domain Y174D mutant, 6xHis tagged)	1 x 100 µg	AT	4°C
CS-GE06	Vav2 GEF protein (human recomb. DH domain, 6xHis tagged)	1 x 100 µg	AT	4°C

Campaign 2 2024 Cytoskeleton

Small GTPases Activation Assays

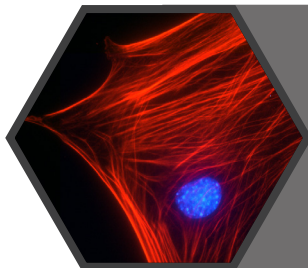
Product List

CAT. NO.	PRODUCT	AMOUNT	Shipping Temp.	Storage on Arrival
CS-GE07	ARNO Protein: GEF (Sec7) domain (aa31- 267, human recomb., 6xHis tagged)	1 x 100 µg	AT	4°C
CS-GE08	SOS2 exchange domain (563-1051) protein (Human recombinant)	1 x 100 µg	AT	4°C
CS-GE09	RAPGEF5 Protein: Ras association and exchange domain (57– 580) wild type. (Human recombinant, GST tagged)	1 x 100 µg	AT	4°C
CS-RS02	N-Ras Protein; wild-type (human recombinant with 6xHis-tag)	1 x 100 µg	AT	4°C
CS-RS03	K-Ras4B Protein: wild-type (human recombinant with 6xHis-tag)	1 x 100 µg	AT	4°C
CS-RS04	K-Ras4B Mutant Protein: G12V (human recombinant with 6xHis-tag)	1 x 100 µg	AT	4°C
CS-RS05	R-Ras Protein: wild-type (human recombinant with 6xHis-tag)	1 x 100 µg	AT	4°C
CS-RS06	K-Ras4B Mutant Protein: G13D (human recombinant with 6xHis-tag)	1 x 100 µg	AT	4°C
CS-RS07	K-Ras4B Mutant Protein: G13S (human recombinant with 6xHis-tag)	1 x 100 µg	AT	4°C
CS-RS08	K-Ras4B Mutant Protein: K128A (human recombinant with 6xHis-tag)	1 x 100 µg	AT	4°C
CS-RS09	K-Ras4B Mutant Protein: Q61P (human recombinant with 6xHis-tag)	1 x 100 µg	AT	4°C
CS-RS10	K-Ras4B Mutant Protein: R135A (human recombinant with 6xHis-tag)	1 x 100 µg	AT	4°C
CS-RS11	K-Ras4B Mutant Protein: G12D+I36N (human recombinant with 6xHis-tag)	1 x 100 µg	AT	4°C
CS-RS12	K-Ras4B Mutant Protein: G12D+D38A (human recombinant with 6xHis-tag)	1 x 100 µg	AT	4°C
CS-RS13	K-Ras4B Mutant Protein: G12D (human recombinant with 6xHis-tag)	1 x 100 µg	AT	4°C
CT03-A	C3 transferase protein	1 x 25 µg	AT	4°C
CT03-C	C3 transferase protein	4 x 25 µg	AT	4°C
CT04-A	Cell Permeable Rho Inhibitor (C3 Trans based))	1 x 20 µg	AT	4°C
CT04-B	Cell Permeable Rho Inhibitor (C3 Trans based))	5 x 20 µg	AT	4°C
CT04-C	Cell Permeable Rho Inhibitor (C3 Trans based))	20 x 20 µg	AT	4°C
CT04-XL	Cell Permeable Rho Inhibitor (C3 Trans based))	Large Quantities	AT	4°C
GAP01-A	Rho GAP Protein GST	1 x 50 µg	AT	4°C
GAP01-B	Rho GAP Protein GST	4 x 50 µg	AT	4°C
GAS01-A	Rho GAP Protein: catalytic domain GST	1 x 50 µg	AT	4°C
GAS01-B	Rho GAP Protein: catalytic domain GST	4 x 50 µg	AT	4°C
GDI01-A	GDP dissociation inhibitor protein GST fusion	1 x 25 µg	AT	4°C
GE01-A	Dbs protein GEF domain - HIS fusion	2 x 50 µg	AT	4°C
GE02	SOS1 Ras GEF protein (human recomb. ExD domain, 6xHis tagged)	1 x 100 µg	AT	4°C
GE02-XL	SOS1 Ras GEF protein (human recomb. ExD domain, 6xHis tagged)	1 x 1 mg	AT	4°C
GGA07-A	GGA3-PBD Arf Affinity Beads	1 x 500 µg	AT	4°C
PAK01-A	PAK Rac1/Cdc42 binding domain protein	1 x 250 µg	AT	4°C
PAK01-B	PAK Rac1/Cdc42 binding domain protein	4 x 250 µg	AT	4°C
PAK02-A	PAK Beads, Rac1/Cdc42 binding domain protein on beads	1 x 500 µg	AT	4°C
PAK02-B	PAK Beads, Rac1/Cdc42 binding domain protein on beads	4 x 500 µg	AT	4°C
R17G01-A	Rac1 GST Protein: dominant negative	1 x 25 µg	AT	4°C
R6101-A	Rac1 His Protein: constitutively active	1 x 10 µg	AT	4°C
R6301-A	RhoA His Protein: constitutively active	1 x 10 µg	AT	4°C
RC01-A	Rac1 His Protein: wild type	1 x 100 µg	AT	4°C
RC01-C	Rac1 His Protein: wild type	3 x 100 µg	AT	4°C
RC01-XL	Rac1 His Protein: wild type	1 x 1 mg	AT	4°C
RC02-A	Rac2 His Protein: wild type	1 x 100 µg	AT	4°C
RCG01-C	Rac1 GST Protein: wild type	8 x 25 µg	AT	4°C
RF02-A	Raf protein ras binding domain on GST beads	1 x 2 mg	AT	4°C
RF02-B	Raf protein ras binding domain on GST beads	4 x 2 mg	AT	4°C
RH01-A	RhoA His Protein: wild type	1 x 100 µg	AT	4°C
RH01-C	RhoA His Protein: wild type	3 x 100 µg	AT	4°C
RH01-XL	RhoA His Protein: wild type	1 x 1 mg	AT	4°C
RH03-A	RhoC His Protein: wild type	1 x 100 µg	AT	4°C
RHG01-C	RhoA GST Protein: wild type	8 x 25 µg	AT	4°C
RR02-A	Rap1b protein (Human wild type, His)	1 x 100 µg	AT	4°C

Campaign 2 2024 Cytoskeleton
Small GTPases Activation Assays

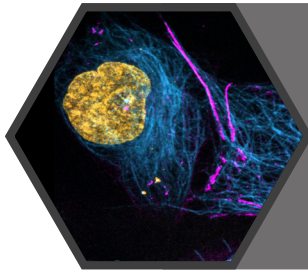
Product List

CAT. NO.	PRODUCT	AMOUNT	Shipping Temp.	Storage on Arrival
RS01-A	H-Ras Protein; wild type 6xHis Tag	1 x 100 µg	AT	4°C
RS01-C	H-Ras Protein; wild type 6xHis Tag	3 x 100 µg	AT	4°C
RT01-A	Rhotekin RBD protein GST fusion	1 x 500 µg	AT	4°C
RT02-A	Rhotekin RBD protein on GST beads	2 x 2 mg	AT	4°C
RT02-B	Rhotekin RBD protein on GST beads	6 x 2 mg	AT	4°C
VCG03-A	VCA domain of WASP (GST fusion)	1 x 500 µg	AT	4°C



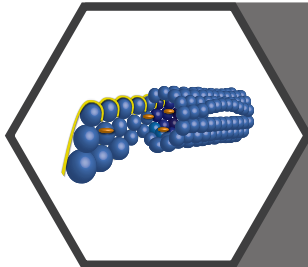
Actin Tools

- Acti-Stain Phalloidins
- Ultra Pure Actin Proteins
- New Pan-Actin Antibody



Live Cell Imaging Tools

- Spirochrome: Actin, DNA, and Tubulin Tools
- New MemGlow™ Fluorogenic Probes
- New Mechanosensory Probes and SPY-BG Dyes



Tubulin Tools

- Tubulin Polymerization Assays
- Tubulin Binding Assays
- Labeled and Unlabeled Tubulin Proteins