

CF™ Dyes

The next-generation dyes for protein labeling

May 2009

ADVANTAGES

- **Brightness**
CF dyes match or surpass the brightness of Alexa® Fluor dyes and Cy™ and other commercially available dyes.
- **Photostability**
CF dyes are among the most photostable dyes.
- **Specificity and *in-vivo* Stability**
CF-labeled antibodies offer superior specificity and improved half-life for *in-vivo* imaging.
- **pH Insensitivity**
CF dyes remain highly fluorescent over a wide pH range.
- **Solubility**
CF dyes are highly soluble in both water and a wide range of organic solvents.
- **Compatibility**
CF dyes are compatible with common excitation sources and existing filters.
- **Color Selection**
CF dye series offers the largest dye collection with wavelengths ranging from UV to near IR.

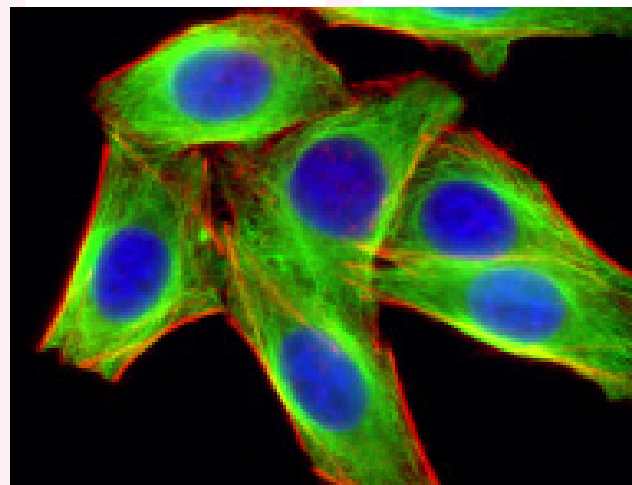


Figure 1. HeLa cells were stained with CF 555 phalloidin (red), mouse anti- α -tubulin followed by goat anti-mouse CF 488 IgG (green) and DAPI (blue), respectively.

PRODUCTS

Reactive Dyes

Secondary Antibodies

Streptavidin

Phalloidin & Annexin-V Conjugates

Other Labeled Reagents

Fluorescence Emission Spectra of CF Dyes

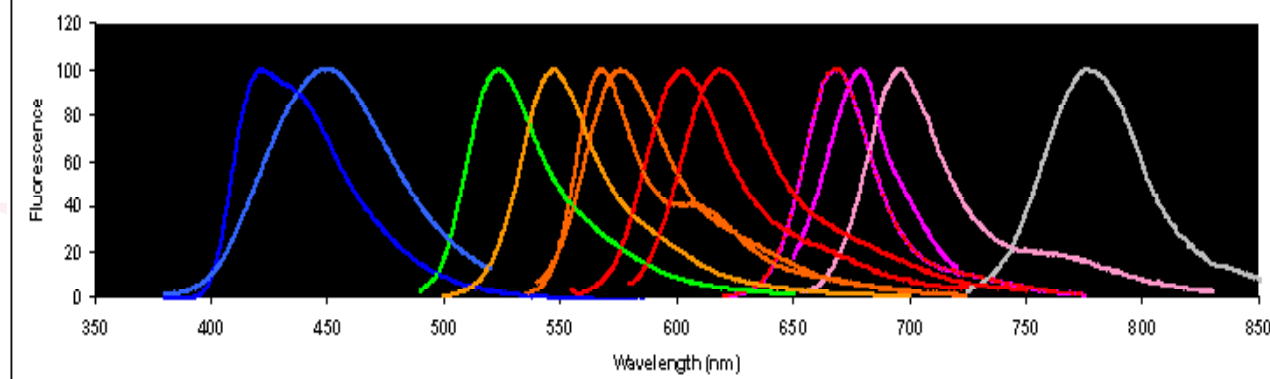


Table A. CF Dye-labeled Secondary antibody Conjugates

Cat#	Product Name	Abs/Em* (nm)	Size	Unit Price (€)
20010*	CF488A goat anti-mouse IgG (H+L), at 2 mg/mL	490/515	0.5 mL	185.00
20011*	CF 488A F(ab') ₂ fragment of goat anti-mouse IgG(H+L), 2 mg/mL	490/515	0.25 mL	147.00
20012*	CF 488A goat anti-rabbit IgG(H+L), 2 mg/mL	490/515	0.5 mL	185.00
20013	CF 488A F(ab') ₂ fragment of goat anti-rabbit IgG(H+L), 2 mg/mL	490/515	0.25 mL	147.00
20030*	CF555 goat anti-mouse IgG (H+L), at 2 mg/mL	555/565	0.5 mL	185.00
20032	CF 555 F(ab') ₂ fragment of goat anti-mouse IgG(H+L), 2 mg/mL	555/565	0.25 mL	147.00
20033*	CF 555 goat anti-rabbit IgG(H+L), 2 mg/mL	555/565	0.5 mL	185.00
20035	CF 555 F(ab') ₂ fragment of goat anti-rabbit IgG(H+L), 2 mg/mL	555/565	0.25 mL	147.00
20036	CF 555 goat anti-guinea pig IgG(H+L), 2 mg/mL	555/565	0.5 mL	185.00
20040*	CF 647 goat anti-mouse IgG(H+L), 2 mg/mL	650/665	0.5 mL	185.00
20042	CF 647 F(ab') ₂ fragment of goat anti-mouse IgG(H+L), 2 mg/mL	650/665	0.25 mL	147.00
20043*	CF 647 goat anti-rabbit IgG(H+L), 2 mg/mL	650/665	0.5 mL	185.00
20045	CF 647 F(ab') ₂ fragment of goat anti-rabbit IgG(H+L), 2 mg/mL	650/665	0.25 mL	147.00
20050	CF 660 goat anti-mouse IgG(H+L), 2 mg/mL	667/685	0.5 mL	185.00
20053	CF 660 goat anti-rabbit IgG(H+L), 2 mg/mL	667/685	0.5 mL	185.00
20065	CF680 goat anti-mouse IgG(H+L), highly cross-absorbed, 2 mg/mL	681/698	0.25 mL	224.00
20067	CF680 goat anti-rabbit IgG(H+L), highly cross-absorbed, 2 mg/mL	681/698	0.25 mL	224.00
20070*	CF 750 goat anti-mouse IgG(H+L), 2 mg/mL	755/777	0.5 mL	295.00
20073	CF 750 goat anti-rabbit IgG(H+L), 2 mg/mL	755/777	0.5 mL	295.00
20077	CF770 goat anti-mouse IgG(H+L), highly cross-absorbed, 2 mg/mL	770/797	0.25 mL	224.00
20078	CF770 goat anti-rabbit IgG(H+L), highly cross-absorbed, 2 mg/mL	770/797	0.25 mL	224.00

Table B. Other CF dye-labeled Products

Cat#	Product Name	Abs/Em (nm)	Application	Size	Unit Price (€)
29005	Annexin V, CF488 conjugate	490/515	Apoptosis	0.5 mL	415.00
29004	Annexin V, CF555 conjugate	555/565	Apoptosis	0.5 mL	415.00
29003	Annexin V, CF647 conjugate	650/665	Apoptosis	0.5 mL	415.00
00034	Phalloidin, CF405 conjugate	405/460	Cell skeleton (actin)	300 U	410.00
00042	Phalloidin, CF488A conjugate	488/516	Cell skeleton (actin)	300 U	410.00
00040	Phalloidin, CF555 conjugate	555/565	Cell skeleton (actin)	300 U	410.00
00041	Phalloidin, CF647 conjugate	650/665	Cell skeleton (actin)	300 U	410.00

Table C. Reactive CF Dyes and Labeling Kits

Cat#	Product Name	Abs/Em* (nm)	Function	Size	Unit Price (€)
92120	CF488 succinimidyl ester	488/516	Amine-reactive	1 umole	295.00
92130	CF555 succinimidyl ester	552/574	Amine-reactive	1 umole	295.00
92135	CF647 succinimidyl ester	650/674	Amine-reactive	1 umole	295.00
92136	CF647 hydrazide	650/674	Aldehyde- or ketone-reactive	1 mg	295.00
92137	CF660 succinimidyl ester	664/685	Amine-reactive	1 umole	295.00
92139	CF680 succinimidyl ester	679/701	Amine-reactive	1 umole	315.00
92142	CF750 succinimidyl ester	752/786	Amine-reactive	1 umole	315.00
92150	CF770 succinimidyl ester	766/800	Amine-reactive	1 umole	315.00
92160	VivoBrite rapid antibody labeling kit for in vivo imaging, CF680 SE	679/701	Amine-reactive	3 labelings	555.00
92161	VivoBrite rapid antibody labeling kit for in vivo imaging, CF750 SE	752/786	Amine-reactive	3 labelings	555.00
92162	VivoBrite rapid antibody labeling kit for in vivo imaging, CF770 SE	766/800	Amine-reactive	3 labelings	555.00

*Absorption/emission wavelengths for free CF dyes and CF dyes conjugated to proteins are slightly different. See Table A

SIC – Società Italiana Chimici

Via Rio nell'Elba 140 – 00138 ROMA

Tel: 06/8818936 – 8800211; Fax: 06/8815319

Web-Site: www.sichim.com; E-mail: info@sichim.com