

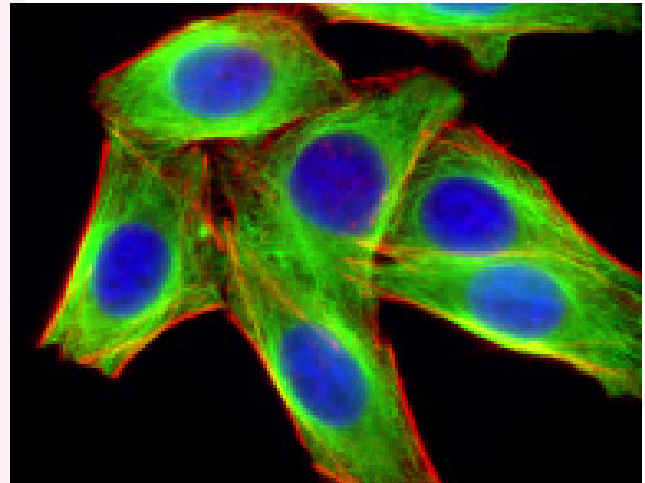
# CF™ Dyes

## The next-generation dyes for protein labeling

May 2009

### ADVANTAGES

- **Brightness**  
CF dyes match or surpass the brightness of Alexa® Fluor dyes and Cy™ and other commercially available dyes.
- **Photostability**  
CF dyes are among the most photostable dyes.
- **Specificity and *in-vivo* Stability**  
CF-labeled antibodies offer superior specificity and improved half-life for *in-vivo* imaging.
- **pH Insensitivity**  
CF dyes remain highly fluorescent over a wide pH range.
- **Solubility**  
CF dyes are highly soluble in both water and a wide range of organic solvents.
- **Compatibility**  
CF dyes are compatible with common excitation sources and existing filters.
- **Color Selection**  
CF dye series offers the largest dye collection with wavelengths ranging from UV to near IR.



**Figure 1.** HeLa cells were stained with CF 555 phalloidin (red), mouse anti- $\alpha$ -tubulin followed by goat anti-mouse CF 488 IgG (green) and DAPI (blue), respectively.

### PRODUCTS

Reactive Dyes

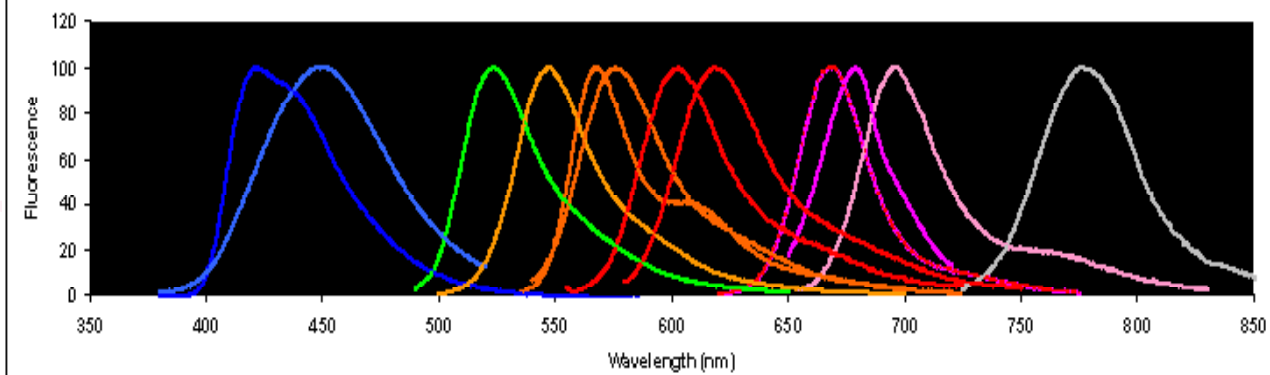
Secondary Antibodies

Streptavidin

Phalloidin & Annexin-V Conjugates

Other Labeled Reagents

### Fluorescence Emission Spectra of CF Dyes



**Table A. CF Dye-labeled Secondary antibody Conjugates**

| Cat#   | Product Name  | Abs/Em* (nm) | Size   | Unit Price (€) | DISCOUNTED PRICE (€) |
|--------|---|--------------|--------|----------------|----------------------|
| 20080  | CF405S goat anti-mouse IgG (H+L)                                  | 405/455      | 1 mg   | 185.00         | 158.00               |
| 20082  | CF405S goat anti-rabbit IgG (H+L)                                 | 405/455      | 1 mg   | 185.00         | 158.00               |
| 20010* | CF488A goat anti-mouse IgG (H+L)                                  | 490/515      | 1 mg   | 185.00         | 158.00               |
| 20011* | CF 488A F(ab') <sub>2</sub> fragment of goat anti-mouse IgG(H+L)  | 490/515      | 0.5 mg | 147.00         | 125.00               |
| 20012* | CF 488A goat anti-rabbit IgG (H+L)                                | 490/515      | 1 mg   | 185.00         | 158.00               |
| 20013  | CF 488A F(ab') <sub>2</sub> fragment of goat anti-rabbit IgG(H+L) | 490/515      | 0.5 mg | 147.00         | 125.00               |
| 20014  | CF 488A dkey anti-mouse IgG (H+L), highly cross-adsorbed          | 490/515      | 1 mg   | 210.00         | 179.00               |
| 20015  | CF 488A donkey anti-rabbit IgG (H+L), highly cross-adsorbed       | 490/515      | 1 mg   | 210.00         | 179.00               |
| 20016  | CF 488A donkey anti-goat IgG (H+L), highly cross-adsorbed         | 490/515      | 1 mg   | 210.00         | 179.00               |
| 20017  | CF 488A goat anti-guinea pig IgG (H+L)                            | 490/515      | 1 mg   | 210.00         | 179.00               |
| 20030* | CF555 goat anti-mouse IgG (H+L)                                   | 555/565      | 1 mg   | 185.00         | 158.00               |
| 20032  | CF 555 F(ab') <sub>2</sub> fragment of goat anti-mouse IgG(H+L)   | 555/565      | 0.5 mg | 147.00         | 125.00               |
| 20033* | CF 555 goat anti-rabbit IgG(H+L)                                  | 555/565      | 1 mg   | 185.00         | 158.00               |
| 20035  | CF 555 F(ab') <sub>2</sub> fragment of goat anti-rabbit IgG(H+L)  | 555/565      | 0.5 mg | 147.00         | 125.00               |
| 20036  | CF 555 goat anti-guinea pig IgG(H+L)                              | 555/565      | 1 mg   | 185.00         | 158.00               |
| 20037  | CF 555 donkey anti-mouse IgG (H+L), highly cross-adsorbed         | 555/565      | 1 mg   | 210.00         | 179.00               |
| 20038  | CF 555 donkey anti-rabbit IgG (H+L), highly cross-adsorbed        | 555/565      | 1 mg   | 210.00         | 179.00               |
| 20039  | CF 555 donkey anti-goat IgG (H+L), highly cross-adsorbed          | 555/565      | 1 mg   | 210.00         | 179.00               |
| 20040* | CF 647 goat anti-mouse IgG(H+L)                                   | 650/665      | 1 mg   | 185.00         | 158.00               |
| 20042  | CF 647 F(ab') <sub>2</sub> fragment of goat anti-mouse IgG(H+L)   | 650/665      | 0.5 mg | 147.00         | 125.00               |
| 20043* | CF 647 goat anti-rabbit IgG(H+L)                                  | 650/665      | 1 mg   | 185.00         | 158.00               |
| 20045  | CF 647 F(ab') <sub>2</sub> fragment of goat anti-rabbit IgG(H+L)  | 650/665      | 0.5 mg | 147.00         | 125.00               |
| 20046  | CF 647 donkey anti-mouse IgG (H+L), highly cross-adsorbed         | 650/665      | 1 mg   | 210.00         | 179.00               |
| 20047  | CF 647 donkey anti-rabbit IgG (H+L), highly cross-adsorbed        | 650/665      | 1 mg   | 210.00         | 179.00               |
| 20048  | CF 647 donkey anti-goat IgG (H+L), highly cross-adsorbed          | 650/665      | 1 mg   | 210.00         | 179.00               |
| 20050  | CF 660 goat anti-mouse IgG(H+L)                                   | 667/685      | 1 mg   | 185.00         | 158.00               |
| 20053  | CF 660 goat anti-rabbit IgG(H+L)                                  | 667/685      | 1 mg   | 185.00         | 158.00               |
| 20065  | CF680 goat anti-mouse IgG(H+L), highly cross-adsorbed             | 681/698      | 0.5 mg | 224.00         | 191.00               |
| 20067  | CF680 goat anti-rabbit IgG(H+L), highly cross-adsorbed            | 681/698      | 0.5 mg | 224.00         | 191.00               |
| 20070* | CF 750 goat anti-mouse IgG(H+L)                                   | 755/777      | 1 mg   | 210.00         | 179.00               |
| 20073  | CF 750 goat anti-rabbit IgG(H+L)                                  | 755/777      | 1 mg   | 210.00         | 179.00               |
| 20077  | CF770 goat anti-mouse IgG(H+L), highly cross-adsorbed             | 770/797      | 0.5 mg | 224.00         | 191.00               |
| 20078  | CF770 goat anti-rabbit IgG(H+L), highly cross-adsorbed            | 770/797      | 0.5 mg | 224.00         | 191.00               |

**Table B. Other CF dye-labeled Products**

| Cat#  | Product Name                 | Abs/Em (nm) | Application           | Size   | Unit Price (€) | DISCOUNTED PRICE (€) |
|-------|------------------------------|-------------|-----------------------|--------|----------------|----------------------|
| 29005 | Annexin V, CF488 conjugate   | 490/515     | Apoptosis             | 0.5 mL | 415.00         | 353.00               |
| 29004 | Annexin V, CF555 conjugate   | 555/565     | Apoptosis             | 0.5 mL | 415.00         | 353.00               |
| 29003 | Annexin V, CF647 conjugate   | 650/665     | Apoptosis             | 0.5 mL | 415.00         | 353.00               |
| 00034 | Phalloidin, CF405 conjugate  | 405/460     | Cell skeleton (actin) | 300 U  | 410.00         | 349.00               |
| 00042 | Phalloidin, CF488A conjugate | 488/516     | Cell skeleton (actin) | 300 U  | 410.00         | 349.00               |
| 00040 | Phalloidin, CF555 conjugate  | 555/565     | Cell skeleton (actin) | 300 U  | 410.00         | 349.00               |
| 00041 | Phalloidin, CF647 conjugate  | 650/665     | Cell skeleton (actin) | 300 U  | 410.00         | 349.00               |

**SIC – Società Italiana Chimici**

Via Rio nell'Elba 140 – 00138 ROMA

Tel: 06/8818936 – 8800211; Fax: 06/8815319

Web-Site: [www.sichim.com](http://www.sichim.com); E-mail: [info@sichim.com](mailto:info@sichim.com)