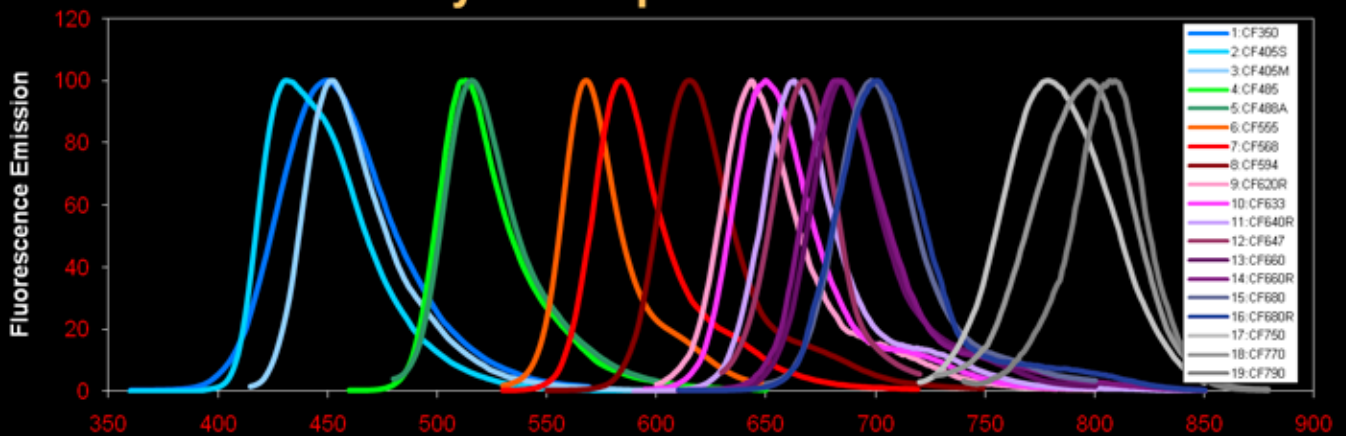


CF™ Dyes

- CF350 Dye •
- CF405S Dye •
- CF405M Dye •
- CF488A Dye •
- CF485 Dye •
- CF555 Dye •
- CF568 Dye •
- CF594 Dye •
- CF594 Dye •
- CF633 Dye •
- CF640R Dye •
- CF647 Dye •
- CF660 Dye •
- Near-IR CF Dye •

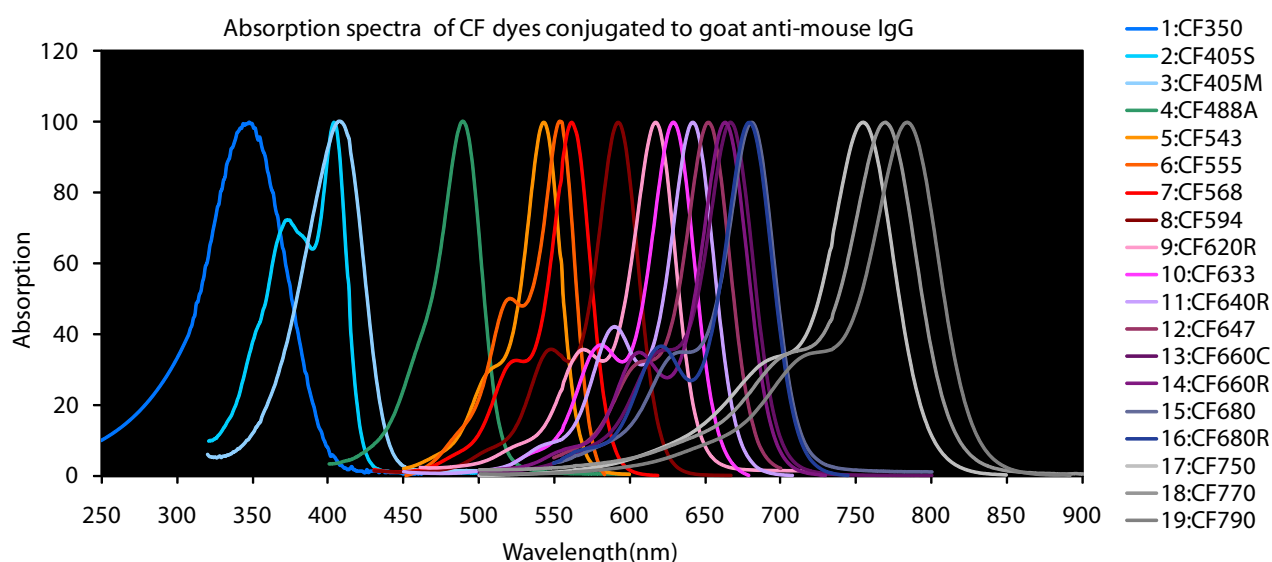
CF™ Dyes: A spectrum of excellence



The next generation dyes for labeling proteins and nucleic acids

CF™ Dyes Overview

CF™ dyes are a series of highly water-soluble fluorescent dyes spanning the visible and nearinfrared (IR) spectrum for labeling biomolecules, especially proteins and nucleic acids. Developed by scientists at Biotium using new breakthrough chemistries, CF™ dyes rival or exceed the quality of other commercial dyes, such as Alexa Fluor® dyes, due to the following novel features. New rhodamine chemistry Rhodamine dyes are known for their excellent photostability and good fluorescence quantum yield; consequently several of the Alexa Fluor® dyes bear the rhodamine core structure. Unfortunately, traditional rhodamine chemistry makes it difficult to extend the fluorescence wavelength to the far-red region and even more challenging in the near-IR region, especially for water-soluble dyes for bioconjugation. Recently, Biotium scientists discovered a new way to prepare novel rhodamine dyes of any fluorescence color from green to near-IR. The new chemistry is a key element in the development of many of our CF™ dyes, particularly our far-red CF™ dyes, which are not only bright and water-soluble but also extremely photostable. Unrivaled near-IR dyes Near-IR dyes are typically much larger in size than dyes in the visible range. The large size often results in serious problems of low dye solubility, dye aggregation and poor fluorescence quantum yield. To overcome the problems, many commercial near-IR dyes, such as the near-IR Alexa Fluor® dyes, DyLight® dyes and IRDyes®, are prepared by placing a number of negatively charged sulfonate group on the dyes. While sulfonation improves dye solubility and fluorescence quantum yield to some degree, it creates another even more serious problem: non-specific binding of the bioconjugates prepared from the dyes. For example, conjugation to a highly negatively charged dye can dramatically alter an antibody's isoelectric point (iP), which is essential for maintaining specific antibody-antigen interaction. With this insight, Biotium scientists devised a revolutionary new approach to near-IR dye design that results in superior physical properties of the dyes without introducing an excessive amount of negative charge. Biotium's near-IR CF™ dyes are based on the core structure of either cyanine dyes or rhodamine dyes. Those core structures are modified such that the intramolecular mobility of the dyes is restricted, which leads to higher quantum yield and better water solubility without adding excessive charge. As a result, near-IR CF™ dyes are much brighter and more photostable than any other near-IR dyes. Most importantly, antibodies labeled with near-IR CF dyes™ give far better signal-to-noise ratio in immunostaining compared with antibody conjugates prepared with other commercial near-IR dyes.



CF350 Dye	1
CF405S Dye	1
CF405M Dye	1
CF488A Dye	1
CF485 Dye	2
CF555 Dye	2
CF568 Dye	3
CF594 Dye	3
CF594 Dye	4
CF633 Dye	4
CF640R Dye	5
CF647 Dye	5
CF660 Dye	5
Near-IR CF Dye	6
ANNEXIN - labeled Products	6
Bungarotoxin - labeled Products	7
PHALLOIDIN - labeled Products	7
STREPTAVIDIN - labeled Products	7
CONCANAVALIN A - labeled Products	7
WHEAT GERM AGGLUTININ - labeled Products	7
HYDRAZIDE - labeled Products	8
NHS ESTER - labeled Products	8
MALEIMIDE - labeled Products	8
SUCCINIMIDYL ESTER - labeled Products	8
AMINOXY - labeled Products	8
SE PROTEIN - labeled Products	9
SE PROTEIN - labeled Products	9
SE PROTEIN - labeled Products	9
EVERBRITE™ MOUNTING MEDIUM	10
NucView™488 Caspase-3 Detection in Living Cells	11
More Life Science Research Products from Biotium	12

INDEX

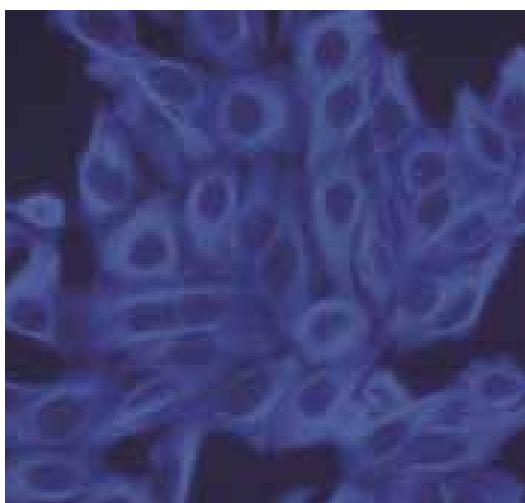


CF™ Dyes Quick Reference Table

CF™ dye	λEx (nm)	λEm (nm)	Excitation source*	Replacement for	Advantages
CF™350	347	448	UV	Alexa Fluor® 350, AMCA, DyLight™ 350	<ul style="list-style-type: none"> Brightest blue fluorescent conjugates for 350 nm excitation Highly water-soluble and pH insensitive
CF™405S	404	431	405 nm laser	Alexa Fluor® 405, Cascade Blue®, DyLight™ 405	<ul style="list-style-type: none"> Better compatibility with common instruments Highly water-soluble and pH-insensitive
CF™405M	408	452	405 nm laser	BD Horizon™ V450, eFluor® 450, Pacific Blue®	<ul style="list-style-type: none"> More photostable than Pacific Blue® dye Less spill-over in the 525/50 green channel Highly water-soluble
CF™488A	490	515	488 nm laser	ATTO™ 488, Alexa Fluor® 488, Cy™2, DyLight™ 488, FAM, FITC, Fluorescein	<ul style="list-style-type: none"> Yields biologically more specific antibody conjugates and has less spill-over fluorescence in the red channel than Alexa Fluor® 488 Extremely photostable Highly water-soluble and pH-insensitive
CF™543	541	560	532, 543, or 546 nm laser	Alexa Fluor® 546, Tetramethylrhodamine (TAMRA)	<ul style="list-style-type: none"> Significantly brighter than Alexa Fluor® 546 Highly water-soluble and pH-insensitive
CF™555	555	565	532, 543, 546, 555, or 568 nm laser	Alexa Fluor® 555, ATTO 550, Cy™3, DyLight™ 549, TRITC	<ul style="list-style-type: none"> Brighter and more photostable than Cy™3
CF™568	562	583	532, 543, 546, 555, or 568 nm laser	Alexa Fluor® 568, ATTO 565, Rhodamine Red	<ul style="list-style-type: none"> Optimal for the 568 nm line of the Ar-Kr mixed-gas laser Brighter and more photostable than Alexa Fluor 568
CF™594	593	614	532, 543, 546, 555, or 568 nm laser	Alexa Fluor® 594, ATTO 594, Dy-Light™ 594, Texas Red™	<ul style="list-style-type: none"> Yields the brightest conjugates among spectrally similar dyes Extremely photostable
CF™620R	617	639	633 or 635 nm laser	LightCycler® Red 640	<ul style="list-style-type: none"> Highly fluorescent Extremely photostable and highly water-soluble
CF™633	630	650	633 or 635 nm laser	Alexa Fluor® 633, Alexa Fluor® 647, Cy™5, DyLight™ 633	<ul style="list-style-type: none"> Yields the brightest antibody conjugates among spectrally similar dyes using 633 nm He-Ne laser or the 635 nm red diode laser Far more photostable than Alexa Fluor® 647 Highly water-soluble
CF™640R	642	662	633, 635, or 640 nm laser	Alexa Fluor® 647, ATTO 647N, Cy™5, DyLight™ 649	<ul style="list-style-type: none"> Has the best photostability among dyes with Cy™5-like spectra Yields highly fluorescent protein conjugates Very water-soluble and pH-insensitive
CF™647	650	665	633, 635, or 640 nm laser	Alexa Fluor® 647, ATTO 647N, Cy™5, DyLight™ 649	<ul style="list-style-type: none"> Brighter and more photostable than Cy™ 5 Highly water-soluble and pH-insensitive
CF™660C	667	685	633, 635, or 640 nm laser	Alexa Fluor® 660	<ul style="list-style-type: none"> Much brighter and more photostable than Alexa Fluor® 660 Highly water-soluble and pH insensitive
CF™660R	663	682	633, 635, or 640 nm laser	Alexa Fluor® 660	<ul style="list-style-type: none"> Brighter than Alexa Fluor® 660 The most photostable 660 nm dye Highly water-soluble and pH insensitive
CF™680	681	698	680 or 685 nm laser	Alexa Fluor® 680, Cy™5.5, DyLight™ 680, IRDye® 680LT	<ul style="list-style-type: none"> The brightest among spectrally similar 680 nm dyes Superior signal-to-noise Ratio in immunostaining Highly water-soluble and pH-insensitive Compatible with Li-COR Odyssey System
CF™680R	680	701	680 or 685 nm laser	Alexa Fluor® 680, Cy™5.5, DyLight™ 680, IRDye® 680LT	<ul style="list-style-type: none"> The most photostable 680 nm dye Suitable for labeling nucleic acids and small biomolecules Highly water-soluble and pH-insensitive Compatible with Li-COR Odyssey System
CF™750	755	777	680 or 685 nm laser	Alexa Fluor® 750, Cy™7, DyLight™750, APC-Alexa Fluor® 750, IRDye® 750	<ul style="list-style-type: none"> Exceptionally bright and stable Less immunogenic than competing dyes Better signal-to-noise Ratio compared to APC-Alexa Fluor® 750 tandem dye with 633 nm excitation
CF™770	770	797	785 nm laser	DyLight™ 800, IRDye® 800CW	<ul style="list-style-type: none"> Exceptionally bright and stable Less immunogenic than competing dyes Compatible with Li-COR Odyssey System
CF™790	784	806	785 nm laser	Alexa Fluor® 790	<ul style="list-style-type: none"> Exceptionally bright and stable Less immunogenic than competing dyes

CF350 Dye - Secondary Antibody - (Abs/Em Maxima: 347/448 nm)

CODE	PRODUCT NAME	UNITY	€
20275	CF350 Donkey Anti-Chicken IgY (IgG) (H+L), highly cross-adsorbed, 2mg/mL	1 mg	252
20142	CF350 Donkey anti-Goat IgG(H+L), highly cross-adsorbed, 2 mg/mL	1 mg	224
20350	CF350 Donkey anti-Mouse IgG(H+L), highly cross-adsorbed, 2 mg/ml	1 mg	224
20351	CF350 Donkey anti-Rabbit IgG(H+L), highly cross-adsorbed, 2 mg/mL	1 mg	224
20148	CF350 Donkey anti-Sheep IgG(H+L), highly cross-adsorbed, 2 mg/mL	1 mg	224
20145	CF350 F(ab') ₂ fragment of Goat anti-Mouse 2 mg/mL	1 mg	147
20146	CF350 F(ab') ₂ fragment of Goat anti-Rabbit 2 mg/mL	1 mg	147
20198	CF350 Goat anti-Guinea Pig IgG(H+L), 2 mg/mL	1 mg	182
20140	CF350 Goat anti-mouse IgG (H+L), 2 mg/mL	1 mg	182
20306	CF350 Goat anti-Mouse IgG(H+L) 2 mg/ml	1 mg	224
20143	CF350 Goat anti-Mouse IgG(H+L), highly cross-adsorbed, 2 mg/mL	1 mg	224
20245	CF350 Goat anti-mouse IgG1, (y1), 2 mg/mL	0.5 mg	273
20255	CF350 Goat anti-mouse IgG2a, (y2a), 2mg/mL	0.5 mg	273
20265	CF350 Goat anti-mouse IgG2b, (y2b), 2mg/mL	0.5 mg	273
20141	CF350 Goat anti-Rabbit IGG(H+L) 2 mg/ml	1 mg	182
20144	CF350 Goat anti-Rabbit IgG(H+L), highly cross-adsorbed, 2 mg/mL	1 mg	224
20147	CF350 Goat anti-Rat IgG(H+L), highly cross-adsorbed, 2 mg/mL	1 mg	224
20149	CF350 Rabbit anti-Mouse IgG(H+L), highly cross-adsorbed, 2 mg/mL	1 mg	224



HeLa cells stained with mouse anti-tubulin followed by CF350 goat anti-mouse IgG.

CF405M Dye - Secondary Antibody - (Abs/Em Maxima: 408/452 nm)

CODE	PRODUCT NAME	UNITY	€
20180	CF405M Goat anti-Mouse IgG(H+L), 2 mg/mL	1 mg	182
20182	CF405M Goat anti-Mouse IgG(H+L), highly cross-adsorbed, 2 mg/mL	1 mg	224
20181	CF405M Goat anti-Rabbit IgG(H+L), 2 mg/ml	1 mg	182

CF405S Dye - Secondary Antibody - (Abs/Em Maxima: 404/431 nm)

CODE	PRODUCT NAME	UNITY	€
20080	CF405S Goat anti-Mouse IGG(H+L) 2 mg/ml	1 mg	182
20082	CF405S Goat anti-Rabbit IGG(H+L) 2 mg/ml	1 mg	182

CF485 Dye - Secondary Antibody - (Abs/Em Maxima: 470/488 nm)

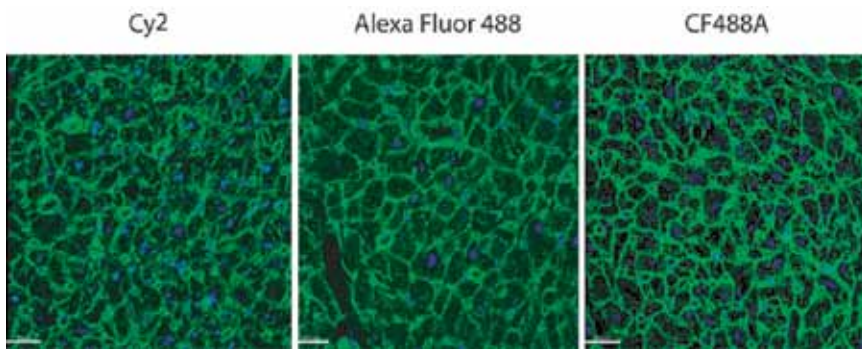
CODE	PRODUCT NAME	UNITY	€
20150	CF485 Goat anti-Mouse IgG(H+L), 2 mg/mL	1 mg	182
20151	CF485 Goat anti-Rabbit IgG(H+L), 2 mg/mL	1 mg	182

CF488A Dye - Secondary Antibody - (Abs/Em Maxima: 490/515 nm)

CODE	PRODUCT NAME	UNITY	€
20293	CF488A Bovine anti-goat IgG(H+L), highly cross-adsorbed, 2 mg/mL	1 mg	224
20225	CF488A Chicken Anti-Goat IgG (H+L), 2mg/mL	1 mg	224
20057	CF488A Chicken Anti-Goat IgG (H+L), highly cross-adsorbed, 2 mg/mL	1 mg	224
20029	CF488A Chicken anti-Mouse IgG(H+L), highly cross-adsorbed, 2mg/mL	1 mg	224
20208	CF488A Chicken anti-Mouse IgG(H+L),2 mg/mL	1 mg	182
20209	CF488A Chicken anti-Rabbit IgG(H+L),2 mg/mL	1 mg	182
20166	CF488A Donkey anti-Chicken IgG(H+L), highly cross-adsorbed, 2 mg/mL	1 mg	224
20016	CF488A Donkey anti-Goat IGG(H+L) highly cross-adsorbed, 2 mg/mL	1 mg	224
20169	CF488A Donkey anti-Guinea Pig IgG(H+L), highly cross-adsorbed, 2 mg/mL	1 mg	224
20074	CF488A Donkey anti-Human IgG(H+L), highly cross-adsorbed, 2 mg/mL	1 mg	224
20014	CF488A Donkey anti-Mouse IGG(H+L) highly cross-adsorbed, 2 mg/mL	1 mg	224
20015	CF488A Donkey anti-Rabbit IGG(H+L) highly cross-adsorbed, 2 mg/mL	1 mg	224
20027	CF488A Donkey anti-Rat IgG(H+L), highly cross-adsorbed, 2 mg/mL	1 mg	224
20024	CF488A Donkey anti-Sheep IgG(H+L), highly cross-adsorbed, 2 mg/mL	1 mg	224
20011	CF488A F(AB') ₂ FRAGMENT OF Goat anti-Mouse 2 mg/MI	0,5 mg	147
20013	CF488A F(AB') ₂ FRAGMENT OF Goat anti-Rabbit 2 mg/MI	0,5 mg	147
20020	CF488A Goat anti-Chicken IgY(H+L), highly cross-adsorbed, 2 mg/mL	1 mg	224
20017	CF488A Goat anti-Guinea Pig IGG(H+L) 2 mg/mL	1 mg	182
20022	CF488A Goat anti-Human IgG(H+L), highly cross-adsorbed, 2 mg/mL	1 mg	224
20010	CF488A Goat anti-Mouse IGG (H+L) 2 mg/mL	1 mg	182
20018	CF488A Goat anti-Mouse IgG(H+L), highly cross-adsorbed, 2 mg/mL	1 mg	224
20012	CF488A Goat anti-Rabbit IGG(H+L) 2 mg/ml	1 mg	182
20019	CF488A Goat anti-Rabbit IgG(H+L), highly cross-adsorbed, 2 mg/mL	1 mg	224
20023	CF488A Goat anti-Rat IgG(H+L), highly cross-adsorbed, 2 mg/mL	1 mg	224
20028	CF488A Goat anti-Swine IgG(H+L), 2 mg/mL	1 mg	182
20079	CF488A Rabbit Anti-Chicken IgY (IgG) (H+L), 2mg/mL	1 mg	182
20021	CF488A Rabbit anti-Goat IgG(H+L), 2 mg/ml	1 mg	182
20071	CF488A Rabbit anti-Human IgG(H+L), highly cross-adsorbed, 2 mg/mL	1 mg	224
20026	CF488A Rabbit anti-Mouse IgG(H+L), highly cross-adsorbed, 2 mg/ml	1 mg	224
20025	CF488A Rabbit anti-Rat IgG(H+L), highly cross-adsorbed, 2 mg/mL	1 mg	224
20172	CF488A Rabbit anti-Sheep IgG(H+L), highly cross-adsorbed, 2 mg/mL	1 mg	224

CF555 Dye - Secondary Antibody - (Abs/Em Maxima: 555/565 nm)

CODE	PRODUCT NAME	UNITY	€
20039	CF555 Donkey anti-Goat IGG(H+L) highly cross-adsorbed, 2 mg/mL	1 mg	224
20276	CF555 Donkey Anti-Guinea Pig IgG (H+L), highly cross-adsorbed, 2 mg/mL	1 mg	252
20037	CF555 Donkey anti-Mouse IGG(H+L) highly cross-adsorbed, 2 mg/mL	1 mg	224
20038	CF555 Donkey anti-Rabbit IGG(H+L) highly cross-adsorbed, 2 mg/mL	1 mg	224
20234	CF555 Donkey anti-Sheep IgG(H+L), highly cross-adsorbed, 2 mg/mL	1 mg	224
20032	CF555 F(AB') ₂ Goat anti-Mouse IGG(H+L) 2 mg/mL	0,5 mg	147
20035	CF555 F(AB') ₂ Goat anti-Rabbit IGG(H+L) 2 mg/mL	0,5 mg	147
20034	CF555 Goat anti-Chicken IgY(H+L), highly cross-adsorbed, 2 mg/mL	1 mg	224
20036	CF555 Goat anti-Guinea Pig IGG(H+L) 2 mg/mL	1 mg	182
20230	CF555 Goat anti-Human IgG(H+L), highly cross-adsorbed, 2 mg/mL	1 mg	224
20030	CF555 Goat anti-Mouse IGG(H+L), 2 mg/ml	1 mg	182
20231	CF555 Goat anti-Mouse IgG(H+L), highly cross-adsorbed, 2 mg/mL	1 mg	224
20033	CF555 Goat anti-Rabbit IGG(H+L), 2mg/ml	1 mg	182
20232	CF555 Goat anti-Rabbit IgG(H+L), highly cross-adsorbed, 2 mg/mL	1 mg	224
20233	CF555 Goat anti-Rat IgG(H+L), highly cross-adsorbed, 2 mg/mL	1 mg	224
20236	CF555 Goat anti-Swine IgG(H+L), 2 mg/mL	1 mg	182
20031	CF555 Rabbit anti-Goat IgG(H+L), 2 mg/mL	1 mg	182
20235	CF555 Rabbit anti-Mouse IgG(H+L), highly cross-adsorbed, 2 mg/mL	1 mg	224



Cryosections of human heart stained with rabbit antifibronectin followed by goat anti-rabbit IgG conjugated to Cy2, Alexa Fluor 488, and CF488A, respectively. Courtesy of Dr. Sawa Kostin at Max-Planck-Institute für Herz- und Lungenforschung (W.G. Kerckhoff-Institut) in Bad Nauheim, Hessen, Germany.

CF568 Dye - Secondary Antibody - (Abs/Em Maxima: 562/583 nm)

CODE	PRODUCT NAME	UNITY	€
20294	CF568 Bovine anti-goat IgG(H+L), highly cross-adsorbed, 2 mg/mL	1 mg	224
20106	CF568 Donkey anti-Goat IgG(H+L), highly cross-adsorbed, 2 mg/mL	1 mg	224
20105	CF568 Donkey anti-Mouse IGG(H+L) highly cross-adsorbed, 2 mg/mL	1 mg	224
20098	CF568 Donkey anti-Rabbit IGG(H+L) highly cross-adsorbed, 2 mg/mL	1 mg	224
20092	CF568 Donkey Anti-Rat IgG (H+L), highly cross-adsorbed, 2mg/mL	1 mg	224
20095	CF568 Donkey anti-Sheep IgG(H+L), highly cross-adsorbed, 2 mg/mL	1 mg	224
20109	CF568 F(ab') ₂ fragment of Goat anti-Mouse 2 mg/mL	1 mg	224
20099	CF568 F(ab') ₂ fragment of Goat anti-Rabbit 2 mg/mL	1 mg	224
20104	CF568 Goat anti-Chicken IgY(H+L), highly cross-adsorbed, 2 mg/mL	1 mg	224
20108	CF568 Goat anti-Guinea Pig IgG(H+L), 2 mg/ml	1 mg	224
20097	CF568 Goat anti-Human IgG(H+L), highly cross-adsorbed, 2 mg/mL	1 mg	224
20100	CF568 Goat anti-Mouse IGG(H+L) 2 mg/ml	1 mg	224
20101	CF568 Goat anti-Mouse IgG(H+L), highly cross-adsorbed, 2 mg/mL	1 mg	224
20102	CF568 Goat anti-Rabbit IGG(H+L) 2 mg/ml	1 mg	147
20103	CF568 Goat anti-Rabbit IgG(H+L), highly cross-adsorbed, 2 mg/mL	1 mg	147
20096	CF568 Goat anti-Rat IgG(H+L), highly cross-adsorbed, 2 mg/mL	1 mg	224
20091	CF568 Goat anti-Swine IgG(H+L), 2 mg/mL	1 mg	182
20107	CF568 Rabbit anti-Goat IgG(H+L), 2 mg/mL	1 mg	224
20093	CF568 Rabbit anti-Mouse IgG(H+L), highly cross-adsorbed, 2 mg/mL	1 mg	182
20094	CF568 Rabbit anti-Rat IgG(H+L), 2 mg/mL	1 mg	224

CF594 Dye - Secondary Antibody - (Abs/Em Maxima: 593/614 nm)

CODE	PRODUCT NAME	UNITY	€
20295	CF594 Bovine anti-goat IgG(H+L), highly cross-adsorbed, 2 mg/mL	1 mg	252
20226	CF594 Chicken Anti-Goat IgG (H+L), 2mg/mL	1 mg	224
20163	CF594 Chicken anti-Goat IgG(H+L), highly cross-adsorbed, 2 mg/mL	1 mg	224
20161	CF594 Chicken anti-Mouse IgG(H+L), highly cross-adsorbed, 2 mg/mL	1 mg	224
20223	CF594 Chicken Anti-Rabbit IgG (H+L), 2mg/mL	1 mg	224
20162	CF594 Chicken anti-Rabbit IgG(H+L), highly cross-adsorbed, 2 mg/mL	1 mg	224
20167	CF594 Donkey anti-Chicken IgG(H+L), highly cross-adsorbed, 2 mg/mL	1 mg	224
20116	CF594 Donkey anti-Goat IgG(H+L), highly cross-adsorbed, 2 mg/mL	1 mg	224
20170	CF594 Donkey anti-Guinea Pig IgG(H+L), highly cross-adsorbed, 2 mg/mL	1 mg	224
20075	CF594 Donkey anti-Human IgG(H+L), highly cross-adsorbed, 2 mg/mL	1 mg	224
20115	CF594 Donkey anti-Mouse IgG(H+L), highly cross-adsorbed, 2 mg/mL	1 mg	224
20152	CF594 Donkey anti-Rabbit IgG(H+L), highly cross-adsorbed, 2 mg/mL	1 mg	224
20159	CF594 Donkey anti-Rat IGG(H+L) highly cross-adsorbed, 2 mg/mL	1 mg	224
20156	CF594 Donkey anti-Sheep IgG(H+L), highly cross-adsorbed, 2 mg/mL	1 mg	224
20119	CF594 F(ab') ₂ fragment of Goat anti-Mouse 2 mg/mL	1 mg	147
20153	CF594 F(ab') ₂ fragment of Goat anti-Rabbit 2 mg/mL	1 mg	147

CF594 Dye - Secondary Antibody - (Abs/Em Maxima: 593/614 nm)

CODE	PRODUCT NAME	UNITY	€
20114	CF594 Goat anti-Chicken IgY(H+L), highly cross-adsorbed, 2 mg/mL	1 mg	224
20118	CF594 Goat anti-Guinea Pig IgG(H+L), 2 mg/ml	1 mg	182
20154	CF594 Goat anti-Human IgG(H+L), highly cross-adsorbed, 2 mg/mL	1 mg	224
20110	CF594 Goat anti-Mouse IGG(H+L) 2 mg/ml	1 mg	182
20111	CF594 Goat anti-Mouse IgG(H+L), highly cross-adsorbed, 2 mg/mL	1 mg	224
20112	CF594 Goat anti-Rabbit IGG(H+L) 2 mg/ml	1 mg	182
20113	CF594 Goat anti-Rabbit IgG(H+L), highly cross-adsorbed, 2 mg/mL	1 mg	224
20155	CF594 Goat anti-Rat IgG(H+L), highly cross-adsorbed, 2 mg/mL	1 mg	224
20160	CF594 Goat anti-Swine IgG(H+L), 2 mg/mL	1 mg	182
20205	CF594 monoclonal Mouse anti-biotin IgG, 2 mg/mL	0,5 mg	252
20164	CF594 Rabbit anti-Chicken IgG(H+L), 2 mg/mL	1 mg	182
20117	CF594 Rabbit anti-Goat IgG(H+L), 2 mg/mL	1 mg	182
20072	CF594 Rabbit anti-Human IgG(H+L), highly cross-adsorbed, 2 mg/mL	1 mg	224
20158	CF594 Rabbit anti-Mouse IgG(H+L), highly cross-adsorbed, 2 mg/mL	1 mg	224
20157	CF594 Rabbit anti-Rat IgG(H+L), highly cross-adsorbed, 2 mg/mL	1 mg	224
20173	CF594 Rabbit anti-Sheep IgG(H+L), highly cross-adsorbed, 2 mg/mL	1 mg	224

CF633 Dye - Secondary Antibody - (Abs/Em Maxima: 630/650 nmz)

CODE	PRODUCT NAME	UNITY	€
20296	CF633 Bovine anti-goat IgG(H+L), highly cross-adsorbed, 2 mg/mL	1 mg	252
20227	CF633 Chicken Anti-Goat IgG (H+L), 2mg/mL	1 mg	224
20059	CF633 Chicken Anti-Goat IgG (H+L), highly cross-adsorbed, 2 mg/mL	1 mg	224
20222	CF633 Chicken Anti-Mouse IgG (H+L), 2mg/mL	1 mg	224
20139	CF633 Chicken anti-Mouse IgG(H+L), highly cross-adsorbed, 2 mg/mL	1 mg	224
20224	CF633 Chicken Anti-Rabbit IgG (H+L), 2mg/mL	1 mg	224
20058	CF633 Chicken Anti-Rabbit IgG (H+L), highly crossed-adsorbed, 2mg/mL	1 mg	224
20168	CF633 Donkey anti-Chicken IgG(H+L), highly cross-adsorbed, 2 mg/mL	1 mg	224
20127	CF633 Donkey anti-Goat IgG(H+L), highly cross-adsorbed, 2 mg/mL	1 mg	224
20171	CF633 Donkey anti-Guinea Pig IgG(H+L), highly cross-adsorbed, 2 mg/mL	1 mg	224
20076	CF633 Donkey anti-Human IgG(H+L), highly cross-adsorbed, 2 mg/mL	1 mg	224
20124	CF633 Donkey anti-Mouse IgG(H+L), highly cross-adsorbed, 2 mg/mL	1 mg	224
20125	CF633 Donkey anti-Rabbit IgG(H+L), highly cross-adsorbed, 2 mg/mL	1 mg	224
20137	CF633 Donkey anti-Rat IgG(H+L), highly cross-adsorbed, 2 mg/mL	1 mg	224
20134	CF633 Donkey anti-Sheep IgG(H+L), highly cross-adsorbed, 2 mg/mL	1 mg	224
20130	CF633 F(ab') ₂ fragment of Goat anti-Mouse 2 mg/mL	0,5 mg	147
20131	CF633 F(ab') ₂ fragment of Goat anti-Rabbit 2 mg/mL	0,5 mg	147
20126	CF633 Goat anti-Chicken IgY(H+L), highly cross-adsorbed, 2 mg/mL	1 mg	224
20129	CF633 Goat anti-Guinea Pig IgG(H+L), 2 mg/ml	1 mg	182
20132	CF633 Goat anti-Human IgG(H+L), highly cross-adsorbed, 2 mg/mL	1 mg	224
20120	CF633 Goat anti-Mouse IGG(H+L) 2 mg/ml	1 mg	182
20121	CF633 Goat anti-Mouse IgG(H+L), highly cross-adsorbed, 2 mg/mL	1 mg	224
20123	CF633 Goat anti-Rabbit IGG(H+L) highly cross-adsorbed, 2 mg/mL	1 mg	224
20122	CF633 Goat anti-Rabbit IgG(H+L), 2 mg/mL	1 mg	182
20133	CF633 Goat anti-Rat IgG(H+L), highly cross-adsorbed, 2 mg/mL	1 mg	224
20138	CF633 Goat anti-Swine IgG(H+L), 2 mg/mL	1 mg	182
20206	CF633 monoclonal Mouse anti-biotin IgG, 2 mg/mL	0,5 mg	252
20165	CF633 Rabbit anti-Chicken IgG(H+L), 2 mg/mL	1 mg	182
20128	CF633 Rabbit anti-Goat IgG(H+L), 2 mg/mL	1 mg	182
20136	CF633 Rabbit anti-Mouse IgG(H+L), highly cross-adsorbed, 2 mg/mL	1 mg	224
20135	CF633 Rabbit anti-Rat IgG(H+L), highly cross-adsorbed, 2 mg/mL	1 mg	224
20174	CF633 Rabbit anti-Sheep IgG(H+L), highly cross-adsorbed, 2 mg/mL	1 mg	224

CF640R Dye - Secondary Antibody - (Abs/Em Maxima: 642/662 nm)

CODE	PRODUCT NAME	UNITY	€
20297	CF640R Bovine anti-Goat IgG(H+L), highly cross-adsorbed, 2 mg/mL	1 mg	252
20179	CF640R Donkey anti-Goat IgG(H+L), highly cross-adsorbed, 2 mg/mL	1 mg	224
20177	CF640R Donkey anti-Mouse IgG(H+L), highly cross-adsorbed, 2 mg/mL	1 mg	224
20178	CF640R Donkey anti-Rabbit IgG(H+L), highly cross-adsorbed, 2 mg/mL	1 mg	224
20199	CF640R Donkey Anti-Rat IgG (H+L), highly cross-adsorbed, 2 mg/mL	1 mg	224
20083	CF640R Donkey anti-Sheep IgG(H+L), highly cross-adsorbed, 2 mg/mL	1 mg	224
20084	CF640R Goat anti-Chicken IgY(H+L), highly cross-adsorbed, 2 mg/mL	1 mg	224
20085	CF640R Goat anti-Guinea Pig IgG(H+L), 2 mg/mL	1 mg	182
20081	CF640R Goat anti-Human IgG(H+L), highly cross-adsorbed, 2 mg/mL	1 mg	224
20197	CF640R Goat anti-Mouse IgG(H+L), 2 mg/mL	1 mg	182
20304	CF640R Goat anti-Mouse IgG (H+L), highly cross-adsorbed (min X Rat), 2 mg/mL	1 mg	329
20175	CF640R Goat anti-Mouse IgG(H+L), highly cross-adsorbed, 2 mg/mL	1 mg	224
20202	CF640R Goat anti-Rabbit IgG(H+L), 2 mg/mL	1 mg	182
20176	CF640R Goat anti-Rabbit IgG(H+L), highly cross-adsorbed, 2 mg/mL	1 mg	224
20088	CF640R Goat anti-Rat IgG(H+L), highly cross-adsorbed, 2 mg/mL	1 mg	224
20089	CF640R Goat anti-Swine IgG(H+L), 2 mg/mL	1 mg	182
20090	CF640R Rabbit Anti-Goat IgG (H+L), 2 mg/mL	1 mg	182
20200	CF640R Rabbit Anti-Mouse IgG (H+L), highly cross-adsorbed, 2mg/mL	1 mg	224
20201	CF640R Rabbit Anti-Rat IgG (H+L), highly cross-adsorbed, 2 mg/mL	1 mg	224

CF647 Dye - Secondary Antibody - (Abs/Em Maxima: 650/665 nm)

CODE	PRODUCT NAME	UNITY	€
20048	CF647 Donkey anti-Goat IGG(H+L) highly cross-adsorbed, 2 mg/mL	1 mg	224
20046	CF647 Donkey anti-Mouse IGG(H+L) highly cross-adsorbed, 2 mg/mL	1 mg	224
20047	CF647 Donkey anti-Rabbit IGG(H+L) highly cross-adsorbed, 2 mg/mL	1 mg	224
20284	CF647 Donkey anti-Sheep IgG(H+L), highly cross-adsorbed, 2 mg/mL	1 mg	224
20042	CF647 F(AB') ₂ Goat anti-Mouse IGG(H+L) 2 mg/mL	0,5 mg	147
20045	CF647 F(AB') ₂ Goat anti-Rabbit IGG(H+L) 2 mg/mL	0,5 mg	147
20044	CF647 Goat anti-Chicken IgY(H+L), highly cross-adsorbed, 2 mg/mL	1 mg	224
20041	CF647 Goat anti-Guinea Pig IgG(H+L), 2 mg/mL	1 mg	182
20280	CF647 Goat anti-Human IgG(H+L), highly cross-adsorbed, 2 mg/mL	1 mg	224
20040	CF647 Goat anti-Mouse IGG(H+L), 2mg/ml	1 mg	182
20281	CF647 Goat anti-Mouse IgG(H+L), highly cross-adsorbed, 2 mg/mL	1 mg	224
20043	CF647 Goat anti-Rabbit IGG(H+L), 2mg/ml	1 mg	182
20282	CF647 Goat anti-Rabbit IgG(H+L), highly cross-adsorbed, 2 mg/mL	1 mg	224
20283	CF647 Goat anti-Rat IgG(H+L), highly cross-adsorbed, 2 mg/mL	1 mg	224
20286	CF647 Goat anti-Swine IgG(H+L), 2 mg/mL	1 mg	182
20049	CF647 Rabbit anti-Goat IgG(H+L), 2 mg/mL	1 mg	182
20285	CF647 Rabbit anti-Mouse IgG(H+L), highly cross-adsorbed, 2 mg/mL	1 mg	224

CF660 Dye - Secondary Antibody - (Abs/Em Maxima: 667/685 nm)

CODE	PRODUCT NAME	UNITY	€
20051	CF660 Donkey anti-Goat IgG(H+L), highly cross-adsorbed, 2mg/mL	1 mg	224
20050	CF660 Goat anti-Mouse IGG(H+L) 2 mg/ml	1 mg	182
20052	CF660 Goat anti-Mouse IgG(H+L), highly cross-adsorbed, 2 mg/mL	1 mg	224
20053	CF660 Goat anti-Rabbit IGG(H+L) 2 mg/ml	1 mg	182
20054	CF660R Goat anti-Mouse IgG(H+L), 2 mg/mL	1 mg	182
20055	CF660R Goat anti-Rabbit IgG(H+L), 2 mg/mL	1 mg	182

Near-IR CF680 Dye - Secondary Antibody - (Abs/Em Maxima: 680/701 nm)

CODE	PRODUCT NAME	UNITY	€
20060	CF680 Donkey anti-Goat IgG(H+L), highly cross-adsorbed, 2 mg/mL	1 mg	224
20062	CF680 Donkey anti-Sheep IgG(H+L), highly cross-adsorbed, 2 mg/mL	1 mg	224
20063	CF680 F(ab') ₂ fragment of Goat anti-Mouse 2 mg/mL	1 mg	182
20064	CF680 F(ab') ₂ fragment of Goat anti-Rabbit 2 mg/mL	1 mg	182
20065	cf680 Goat anti-Mouse IGG(H+L) highly cross-adsorbed, 2 mg/mL	0,5 mg	224
20067	cf680 Goat anti-Rabbit IGG(H+L) highly cross-adsorbed, 2 mg/mL	0,5 mg	224
20068	CF680 Goat anti-Rabbit IgG(H+L), 2 mg/mL	1 mg	210
20069	CF680 Goat anti-Rat IgG(H+L), highly cross-adsorbed, 2 mg/mL	1 mg	224
20061	CF680 Rabbit anti-Mouse IgG(H+L), highly cross-adsorbed, 2 mg/mL	1 mg	224
20196	CF680R Donkey anti-Goat IgG(H+L), highly cross-adsorbed, 2mg/mL	0,5 mg	238
20194	CF680R Donkey anti-Mouse IgG(H+L), highly cross-adsorbed, 2mg/mL	0,5 mg	238
20195	CF680R Donkey anti-Rabbit IgG(H+L), highly cross-adsorbed, 2mg/mL	0,5 mg	238
20192	CF680R Goat anti-Mouse IgG(H+L), highly cross-adsorbed, 2mg/mL	0,5 mg	238
20193	CF680R Goat anti-Rabbit IgG(H+L), highly cross-adsorbed, 2mg/mL	0,5 mg	238

Near-IR CF Dye750 - Secondary Antibody - (Abs/Em Maxima: 755/777 nm)

CODE	PRODUCT NAME	UNITY	€
20070	CF750 Goat anti-Mouse IGG(H+L) 2 mg/ml	1 mg	210
20073	CF750 Goat anti-Rabbit IGG(H+L) 2 mg/ml	1 mg	210

Near-IR CF Dye770 - Secondary Antibody - (Abs/Em Maxima: 770/797 nm)

CODE	PRODUCT NAME	UNITY	€
20277	CF770 Donkey Anti-Goat IgG (H+L), highly cross-adsorbed, 2mg/mL	0,5 mg	252
20242	CF770 Donkey Anti-Guinea Pig IgG (H+L), highly cross-adsorbed, 2 mg/mL	0,5 mg	260
20279	CF770 donkey anti-human IgG(H+L), highly cross-adsorbed, 2mg/mL	0,5 mg	252
20288	CF770 goat anti-human IgG(H+L), highly cross-adsorbed, 2mg/mL	0,5 mg	252
20077	CF770 Goat anti-Mouse IGG(H+L) highly cross-adsorbed, 2 mg/mL	0,5 mg	224
20078	CF770 Goat anti-Rabbit IGG(H+L) highly cross-adsorbed, 2 mg/mL	0,5 mg	224
20244	CF770 Rabbit Anti-Guinea Pig IgG (H+L), 2 mg/mL	1 mg	224

ANNEXIN - labeled Products

CODE	PRODUCT NAME	UNITY	€
29012	Annexin V, CF350 conjugate, 50 ug/mL	1 mg	€ 310
29009	Annexin V, CF405M conjugate, 50 ug/mL	1 mg	€ 310
29005	Annexin V, CF488A conjugate, 50 ug/mL	1 mg	€ 310
29004	Annexin V, CF555 conjugate, 50 ug/mL	1 mg	€ 310
29010	Annexin V, CF568 conjugate, 50 ug/mL	1 mg	€ 310
29011	Annexin V, CF594 conjugate, 50 ug/mL	1 mg	€ 310
29008	Annexin V, CF633 conjugate, 50 ug/mL	1 mg	€ 310
29014	Annexin V, CF640R conjugate, 50 ug/mL	1 mg	€ 310
29003	Annexin V, CF647 conjugate, 50ug/mL	1 mg	€ 310
29007	Annexin V, CF680 conjugate, lyophilized	25 ug	€ 350
29006	Annexin V, CF750 conjugate, lyophilized	25 ug	€ 350

Bungarotoxin - labeled Products

CODE	PRODUCT NAME	UNITY	€
00005	CF488A a-Bungarotoxin	0.5 mg	€ 420
00006	CF568 a-Bungarotoxin	0.5 mg	€ 420
00007	CF594 a-Bungarotoxin	0.5 mg	€ 420
00009	CF633 a-Bungarotoxin	0.5 mg	€ 420

PHALLOIDIN - labeled Products

CODE	PRODUCT NAME	UNITY	€
00049	Phalloidin, CF350 conjugate	300 U	€ 410
00042	Phalloidin, CF488A conjugate	300 U	€ 410
00040	Phalloidin, CF555 conjugate	300 U	€ 410
00044	Phalloidin, CF568 conjugate	300 U	€ 410
00045	Phalloidin, CF594 conjugate	300 U	€ 410
00046	Phalloidin, CF633 conjugate	300 U	€ 410
00041	Phalloidin, CF647 conjugate	300 U	€ 410
00047	Phalloidin, CF660R conjugate	300 U	€ 410
00048	Phalloidin, CF680R conjugate	300 U	€ 435

STREPTAVIDIN - labeled Products

CODE	PRODUCT NAME	UNITY	€
29031	CF350 Streptavidin	1 mg	€ 225
29032	CF405S Streptavidin	1 mg	€ 225
29033	CF405M Streptavidin	1 mg	€ 225
29034	CF488A Streptavidin	1 mg	€ 225
29035	CF568 Streptavidin	1 mg	€ 225
29036	CF594 Streptavidin	1 mg	€ 225
29037	CF633 Streptavidin	1 mg	€ 225
29040	CF660R Streptavidin	1 mg	€ 225

CONCAVALIN A - labeled Products

CODE	PRODUCT NAME	UNITY	€
29015	CF350 Concanavalin A (Con A)	5x1 mg	€ 185
29016	CF488A Concanavalin A (Con A)	5x1 mg	€ 185
29017	CF594 Concanavalin A (Con A)	5x1 mg	€ 185
29018	CF633 Concanavalin A (Con A)	5x1 mg	€ 185
29019	CF640R Concanavalin A (Con A)	5x1 mg	€ 185

WHEAT GERM AGGLUTININ - labeled Products

CODE	PRODUCT NAME	UNITY	€
29021	CF350 Wheat Germ Agglutinin (WGA)	5x1mg	€ 350
29022	CF488A Wheat Germ Agglutinin (WGA)	5x1mg	€ 350
29023	CF594 Wheat Germ Agglutinin (WGA)	5x1mg	€ 350
29024	CF633 Wheat Germ Agglutinin (WGA)	5x1mg	€ 350
29026	CF640R Wheat Germ Agglutinin (WGA)	5x1mg	€ 350
29025	CF680R Wheat Germ Agglutinin (WGA)	5x1mg	€ 380

HYDRAZIDE - labeled Products

CODE	PRODUCT NAME	UNITY	€
92151	CF350 hydrazide	1 mg	€ 210
92152	CF488A hydrazide	1 mg	€ 210
92154	CF568 hydrazide	1 mg	€ 210
92158	CF594 hydrazide	1 mg	€ 210
92156	CF633 hydrazide	1 mg	€ 210

NHS ESTER - labeled Products

CODE	PRODUCT NAME	UNITY	€
92130	CF555 NHS ester	1 umole	€ 295
92135	CF647 NHS ester	1 umole	€ 295
92142	CF750 NHS ester	1 umole	€ 315
92150	CF770 NHS ester	1 umole	€ 315

MALEIMIDE - labeled Products

CODE	PRODUCT NAME	UNITY	€
92020	CF350 maleimide	1 umole	€ 275
92030	CF405S maleimide	1 umole	€ 275
92021	CF405M maleimide	1 umole	€ 275
92022	CF488A maleimide	1 umole	€ 275
92024	CF568 maleimide	1 umole	€ 275
92025	CF594 maleimide	1 umole	€ 275
92033	CF620R maleimide	1 umole	€ 275
92026	CF633 maleimide	1 umole	€ 275
92029	CF680 maleimide	1 umole	€ 275
92032	CF680R maleimide	1 umole	€ 325

SUCCINIMIDYL ESTER - labeled Products

CODE	PRODUCT NAME	UNITY	€
92109	CF350 succinimidyl ester	1 umole	€ 295
92110	CF405S succinimidyl ester	1 umole	€ 295
92111	CF405M succinimidyl ester	1 umole	€ 295
92120	CF488A succinimidyl ester	1 umole	€ 295
92131	CF568 succinimidyl ester	1 umole	€ 295
92132	CF594 succinimidyl ester	1 umole	€ 295
92106	CF620R succinimidyl ester	1 umole	€ 295

SUCCINIMIDYL ESTER - labeled Products

CODE	PRODUCT NAME	UNITY	€
92133	CF633 succinimidyl ester	1 umole	€ 295
92108	CF640R succinimidyl ester	1 umole	€ 295
92137	CF660C succinimidyl ester	1 umole	€ 295
92134	CF660R succinimidyl ester	1 umole	€ 295
92107	CF680R succinimidyl ester	1 umole	€ 350
92155	CF790 succinimidyl ester	0.25umole	€ 185

AMINOXY - labeled Products

CODE	PRODUCT NAME	UNITY	€
92050	CF350, aminoxy	1 mg	€ 550
92051	CF488A, aminoxy	1 mg	€ 550
92052	CF594, aminoxy	1 mg	€ 550
92053	CF633, aminoxy	1 mg	€ 550

SE PROTEIN - labeled Products

CODE	PRODUCT NAME	UNITY	€
92210	CF350 SE protein labeling kit	3 labelings	€ 490
92211	CF405S SE protein labeling kit	3 labelings	€ 490
92212	CF405M SE protein labeling kit	3 labelings	€ 490
92213	CF488A SE protein labeling kit	3 labelings	€ 490
92215	CF568 SE protein labeling kit	3 labelings	€ 490
92216	CF594 SE protein labeling kit	3 labelings	€ 490
92217	CF633 SE protein labeling kit	3 labelings	€ 490
92225	CF640R SE protein labeling kit	3 labelings	€ 490
92219	CF660C SE protein labeling kit	3 labelings	€ 490
92223	CF660R SE protein labeling kit	3 labelings	€ 490
92220	CF680 SE protein labeling kit	3 labelings	€ 490
92226	CF680R SE protein labeling kit	3 labelings	€ 490

SE PROTEIN - labeled Products

CODE	PRODUCT NAME	UNITY	€
92160	VivoBrite rapid antibody labeling kit for small animal in vivo imaging, CF680 SE	3 labelings	€ 555
92161	VivoBrite rapid antibody labeling kit for small animal in vivo imaging, CF750 SE	3 labelings	€ 555
92162	VivoBrite rapid antibody labeling kit for small animal in vivo imaging, CF770 SE	3 labelings	€ 555

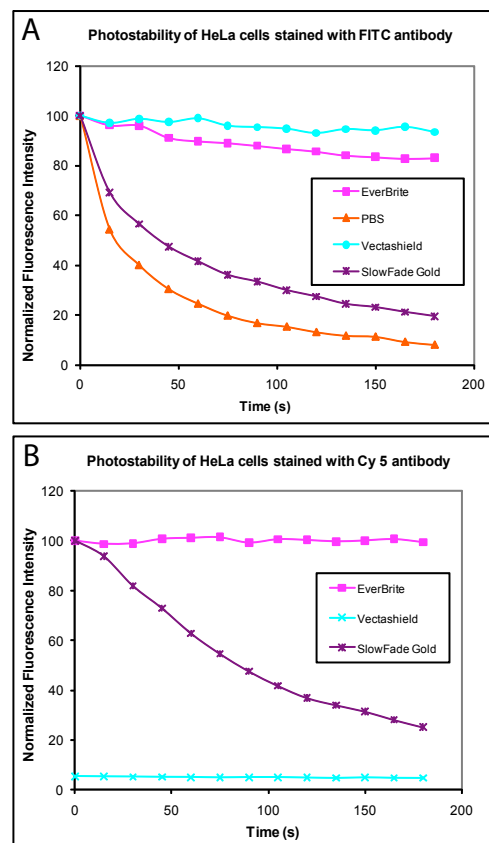
SE PROTEIN - labeled Products

CODE	PRODUCT NAME	UNITY	€
92230	Mix-n-Stain CF350 antibody labeling kit, 1X(50-100ug) labeling	1 labeling	€ 154
92251	Mix-n-Stain CF405S antibody labeling kit, 1X(20-50ug) labeling	1 labeling	€ 140
92231	Mix-n-Stain CF405S antibody labeling kit, 1X(50-100ug) labeling	1 labeling	€ 154
92252	Mix-n-Stain CF405M Antibody Labeling Kit, 1X(20-50ug) labeling	1 labeling	€ 140
92232	Mix-n-Stain CF405M Antibody Labeling Kit, 1X(50-100ug) labeling	1 labeling	€ 154
92253	Mix-n-Stain CF488A antibody labeling kit, 1x(20-50 ug) labeling	1 labeling	€ 140
92233	Mix-n-Stain CF488A antibody labeling kit, 1x(50-100 ug) labeling	1 labeling	€ 154
92254	Mix-n-Stain CF555 antibody labeling kit, 1x(20-50 ug) labeling	1 labeling	€ 140
92234	Mix-n-Stain CF555 antibody labeling kit, 1x(50-100 ug) labeling	1 labeling	€ 154
92235	Mix-n-Stain CF568 antibody labeling kit, 1X(50-100ug) labeling	1 labeling	€ 154
92236	Mix-n-Stain CF594 antibody labeling kit, 1X(50-100ug) labeling	1 labeling	€ 154
92257	Mix-n-Stain CF633 antibody labeling kit, 1x(20-50 ug) labeling	1 labeling	€ 140
92237	Mix-n-Stain CF633 antibody labeling kit, 1x(50-100 ug) labeling	1 labeling	€ 154
92258	Mix-n-Stain CF640R antibody labeling kit, 1x(20-50 ug) labeling	1 labeling	€ 140
92245	Mix-n-Stain CF640R antibody labeling kit, 1x(50-100 ug) labeling	1 labeling	€ 154
92239	Mix-n-Stain CF660C antibody labeling kit, 1X(50-100ug) labeling	1 labeling	€ 154
92243	Mix-n-Stain CF660R antibody labeling kit, 1X(50-100ug) labeling	1 labeling	€ 154
92241	Mix-n-Stain CF750 antibody labeling kit, 1x(50-100 ug) labeling	1 labeling	€ 154
92265	Mix-n-Stain CF770 antibody labeling kit, 1x(20-50 ug) labeling	1 labeling	€ 140
92242	Mix-n-Stain CF770 antibody labeling kit, 1x(50-100 ug) labeling	1 labeling	€ 154

EVERBRITE™ MOUNTING MEDIUM

EverBrite™ mounting medium is an antifade mounting medium uniquely formulated for preserving fluorescence of CF™ dyes and other fluorescent dyes across the entire visible and near-IR spectra. Unlike Vectashield®, EverBrite™ mounting media is compatible with cyanine-based fluorophores (e.g., Cy™2, Cy™5, Alexa Fluor® 647 and DyLight™ 649). EverBrite™ mounting media is available with DAPI, which eliminates the need for a separate nuclear counterstaining step. After mounting, slides can be immediately viewed or sealed and stored at 4°C for at least several months.

Figure 1. Intracellular staining of HeLa cells was performed using anti-tubulin antibody followed by Goat anti-Mouse-FITC (A) or Goat anti-Mouse-Cy5 (B). Cells were continuously exposed using a mercury arc lamp microscope. Images were captured every 15 seconds and fluorescence intensity of each frame was normalized to time 0. In B, data for Vectashield is not normalized in order to illustrate the intensity drop of Cy™5 dye.



CoverGrip™ Coverslip Sealant

CoverGrip™ Coverslip Sealant is an organic adhesive medium formulated specifically for sealing the edges of coverslips mounted using wet set antifade mounting medium for immunofluorescence. Traditionally, nail polish has been used to seal the edges of coverslips prior to fluorescence microscopy. However, components in nail polish such as isopropyl alcohol can leach into wet set mounting medium and interfere with specimen fluorescence, especially in the case of GFP. CoverGrip™ Coverslip Sealant is not miscible with aqueous mounting media, and dries to form clear, hard seal along the edges of the coverslip. CoverGrip™ Coverslip Sealant is made with limonene, a pleasant-smelling natural hydrocarbon made from citrus peels that is more environmentally friendly and less toxic than organic solvents. Available in 15 mL brush cap applicator bottles and 100 mL dropper-top refill bottles.



Cat.#	Product Name	Size
23001	EverBrite™ Mounting Medium	10 mL
23002	EverBrite™ Mounting Medium with DAPI	10 mL
23005	CoverGrip™ Coverslip Sealant, brush cap applicator bottle	15 mL
23005-1	CoverGrip™ Coverslip Sealant, refill	100 mL

NucView™488 Caspase-3 Detection in Living Cells

NucView™488 Caspase-3 Assay Kits

NucView™ 488 Caspase-3 Assay Kit for live cells contains NucView™ 488 Caspase-3 substRate in DMSO and caspase-3 inhibitor Ac-DEVD-CHO.

NucView™ 488 Caspase-3 substRate and sulforhodamine 101-annexin V kit includes deep red fluorescent sulforhodamine 101 (Texas Red®-annexin V for dual detection of caspase-3 activity and phosphatidylserine translocation in intact cells (Figure 4).

The NucView™ 488 and MitoView™ 633 Apoptosis Kit includes far red fluorescent MitoView™ 633 mitochondrial membrane potential dye for simultaneous measurement of caspase-3 activity and mitochondrial membrane potential (Figure 5). NucView™ 488 Caspase-3 substRate is also offered as a 1 mM stock solution in DMSO or PBS. DMSO facilitates NucView™ 488 Caspase-3 staining in some cell types. The substRate is offered in PBS for use in DMSO-sensitive cell types.

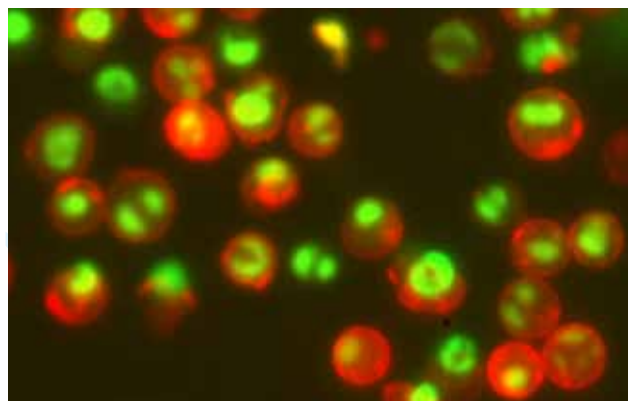


Figure 4. Staurosporine-induced apoptotic Jurkat cells stained with NucView™ 488 Caspase-3 SubstRate and Sulforhodamine 101 (Texas Red®) Annexin V Dual Apoptosis Assay Kit. Caspase-3 activity is indicated by green nuclear staining, while exposed phosphatidylserine on the plasma membrane surface is stained red by Texas Red® Annexin V.

Ordering Information

Catalog number	Product description
30029	NucView™ 488 Caspase-3 Assay Kit for Live Cells
30030	NucView™ 488 Caspase-3 SubstRate and Sulforhodamine 101 (Texas Red®) Annexin V Dual Apoptosis Assay Kit
30062	NucView™ 488 and MitoView 633 Apoptosis Kit
10403	NucView™ 488 Caspase-3 Enzyme SubstRate 1mM in PBS
10402	NucView™ 488 Caspase-3 Enzyme SubstRate 1mM in DMSO

For current pricing, please visit www.biotium.com.

Related Products

Biotium offers a variety of apoptosis research tools, including mitochondrial membrane potential dyes, CF™ dye-Annexin V conjugates, direct fluorescence TUNEL labeling kits featuring CF™ dye dUTP conjugates, cell viability and proliferation assays, and live/dead cell quantitation kits. For more information, please visit our website at www.biotium.com.

Biotium products are for research use only. NucView™ and MitoView™ are trademarks of Biotium, Inc. Patents pending. Texas Red® is a registered trademark of Invitrogen.

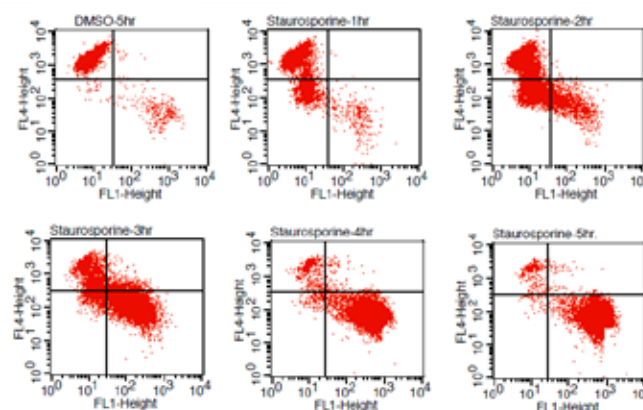
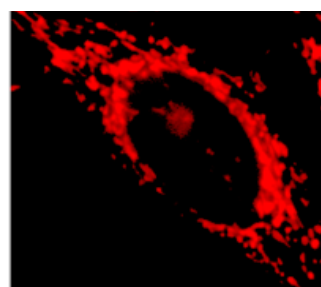


Figure 5. Flow cytometry analysis of caspase-3 activity and mitochondrial membrane potential in staurosporine-treated Jurkat cells using NucView™ 488 and MitoView™ 633 Apoptosis Kit. NucView™ 488 staining is plotted on FL1 (x-axis) and MitoView™ 633 staining is plotted on FL4 (y-axis). As apoptosis progresses, NucView™ 488 signal increases while mitochondrial membrane potential measured by MitoView™ 633 staining decreases.

More Life Science Research Products from Biotium

Apoptosis detection reagents and kits:

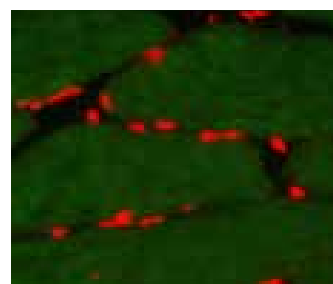
- NucView™ 488 caspase-3 substrate for the detection of caspase-3 activity in live cells
- MitoView™ 633 far-red mitochondrial membrane potential dye
- MitoView™ 488 green fluorescent mitochondrial stain
- JC-1 and other classic mitochondrial dyes
- Resazurin, MTT, and XTT viability assays
- Calcein-AM viability assays
- ATP-Glo™ Bioluminometric Cell Viability Assay Kit
- MCB glutathione detection kit



MitoView™ 633 mitochondrial membrane potential dye

Nuclear counterstains and vital dyes:

- RedDot™ 1 and RedDot™ 2 novel far red nucleus-specific stains for live and fixed cells
- DAPI and Hoechst blue fluorescent nuclear counterstains
- Ethidium homodimer III, propidium iodide, and other vital dyes



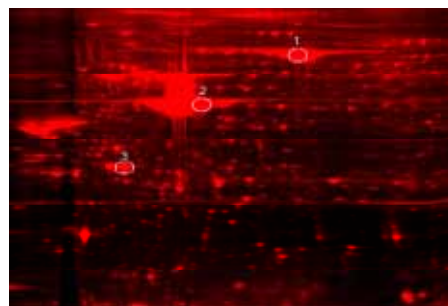
RedDot™ 2 far red nuclear counterstain

Other cell biology research tools:

- Carbocyanine lipophilic dye membrane labeling kits
- Cytosolic tracers
- Firefly and Renilla Luciferase Assay kits
- Enzyme substrates
- Fluorescent reagents for imaging calcium, pH, and other ions
- Biochemical reagents for nitric oxide detection

Genomics and proteomics products:

- GelRed™ and GelGreen™ nucleic acid gel stains: safer alternatives to ethidium bromide and SYBR™ stains
- EvaGreen® dye and master mixes: environmentally safe green fluorescent PCR dye
- AccuBlue™ DNA quantitation kits
- Lumitein™ fluorescent protein gel stain for one step staining of unfixed SDS-PAGE gels



Lumitein™ protein gel stain

Microbiology research tools

- Propidium monoazide for selective PCR amplification from live bacteria



GelRed™ and GelGreen™ nucleic acid gel stains

Distributed by:



**SOCIETÀ
ITALIANA
CHIMICI**
DIVISIONE SCIENTIFICA r.l.

Via Rio nell'Eriba 140 - 00138 Rome - ITALY
Phone: +39 06 8818936 / 8800211 Fax: +39 06 8815319
Web-Site: www.sichim.com E-mail: info@sichim.com