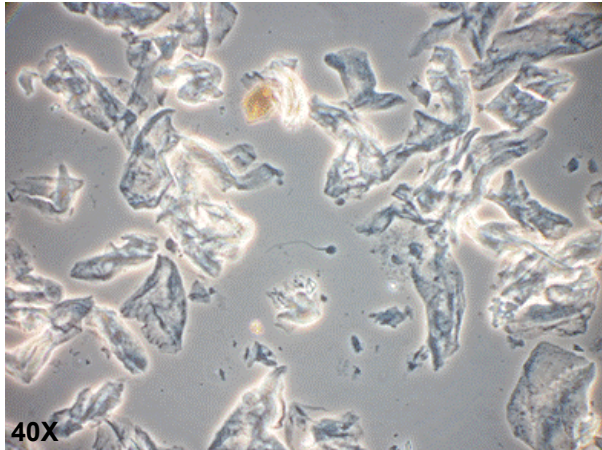
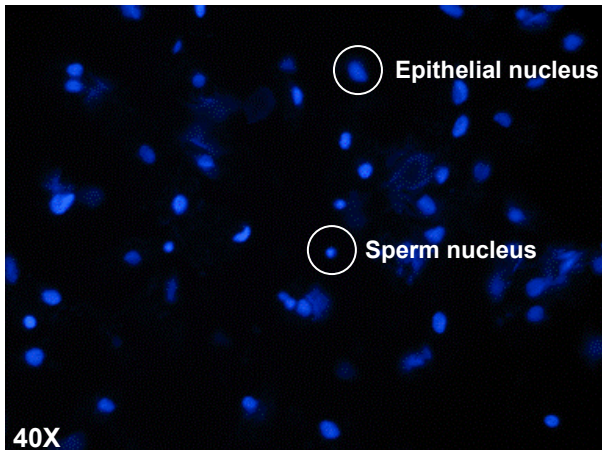


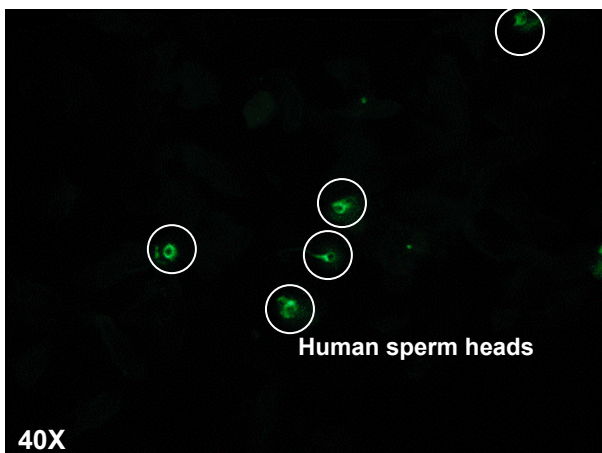
Staining of a post-coital vaginal swab slide using SPERM HY-LITER



- Morphological identification of sperm by bright field and/or phase contrast microscopy: cells, debris, and sperm all appear similar
- Sperm are obscured by cells and debris



- DAPI staining with fluorescent microscopy identifies sperm and epithelial cell nuclei
- Cell nuclei are clearly identified



- Fluorescent microscopy identifies only human sperm heads
- Sperm heads are clearly identified
- Previously concealed sperm are easily observed

IFI - Independent Forensic

Italian Distributor:

Società Italiana Chimici - Rome - phones: 06/8818936 - 8800211 - www.sichim.com