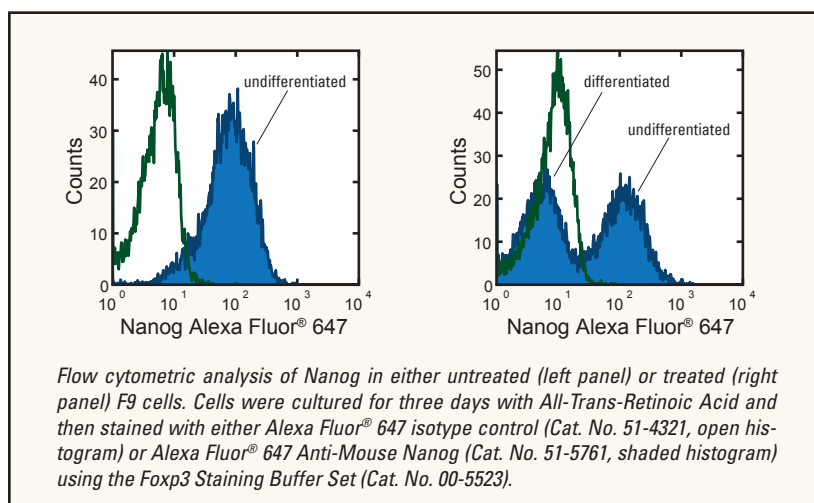


STEM CELL MARKERS

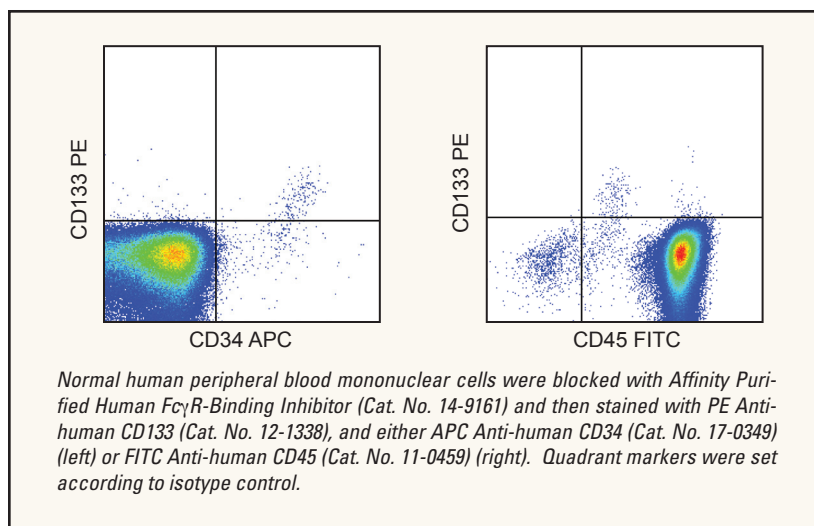
NEW Tools for Stem Cell Research

Stem cells are the subject of intense investigation to elucidate the process of cellular differentiation and to explore stem cell-based therapies for disease. eBioscience is dedicated to providing an extensive selection of antibody reagents available in a variety of fluorochromes to accelerate your stem cell research. Our portfolio contains tools relevant to all areas of stem cell research including hematopoietic stem cell (HSC) and embryonic stem (ES) cell research, as well as the recently described induced pluripotent stem (iPS) cells. Featured below are some recent additions to our line of stem cell reagents.

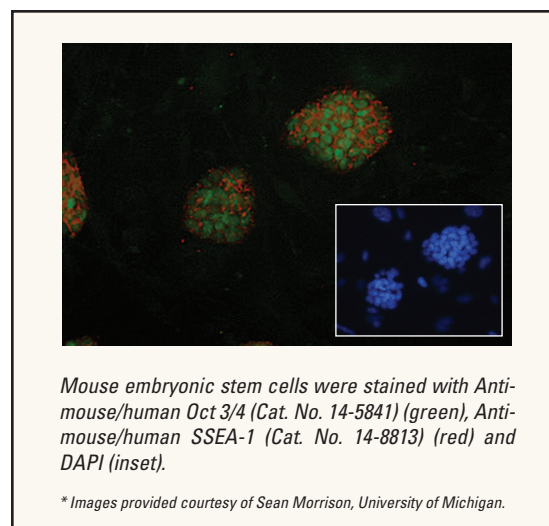
Anti-Mouse Nanog



Anti-Human CD133



Anti-Mouse/Human Oct 3/4



eBioscience New Releases
December | 2008

FEATURING

- CD34 (h, m) **NEW**
- CD96 (h)
- CD133 (h, m) **NEW**
- CD325 (h) **NEW**
- Eomes (h, m) **NEW**
- FGF-acidic (h, m) **NEW**
- FGF-basic (h, m) **NEW**
- gp130 (m) **NEW**
- Nanog (h, m)
- Oct 3/4 (h, m) **NEW**
- SSEA-1,-3,-4 (h, m)
- Accumax[™] Cell Aggregate Dissociation Medium
- Accutase[™] Enzyme Cell Detachment Medium

Reactivity: h=human and m=mouse

NEW Human Stem Cell Markers

Specificity	Clone	Applications	Cat. No.	Formats
CD34	4H11	FC, WB	0349	Purified, PE, APC
CD38	HIT2	FC, IHC	0389	Purified, Biotin, FITC, PE, PE-Cy5, APC, PE-Cy7, Alexa Fluor® 700
CD43	eBio84-3C1	FC, WB	0439	Purified, FITC, PE, APC
CD90	eBio5E10	FC, WB, IHC/F, IP	0909	Purified, Biotin, FITC, PE, PE-Cy5, APC, PerCP-Cy5.5
CD96	NK92.39	FC	0969	PE
CD105	SN6	FC, BA	1057	Purified, FG Purified, PE, APC
CD117/c-Kit	YB5.B8	FC, IHC/F, IP	1179	Purified, Biotin, PE, APC, Pacific Blue®
CD123	6H6	FC, IHC/F, IHC/P	1239	Purified, Biotin, FITC, PE, PE-Cy7, APC, PerCP-Cy5.5
CD133	EMK08	FC, WB	1339	PE, Purified
CD133	TMP4	FC	1338	PE, Biotin
CD135/Flk2	BV10A4H2	FC	1357	Purified, Biotin, FITC, PE, APC
CD144 (VE-Cadherin)	16B1	FC, WB, IHC/P	1449	Purified, Biotin, PE, Alexa Fluor® 488, APC
CD325	8C11	FC, WB, IHC, IP	3259	PE, Purified
CD338/ABCG2	5D3	FC	8888	Purified, FG Purified, Biotin, PE
c-Met	eBioclone 97	FC	8858	Purified, Biotin, FITC
Eomes	21Mags8	ICFC, WB	4876	PE, Purified, Alexa Fluor 647
FGF-acidic	--	BA, ELISA std	8987	Recombinant Protein
FGF-basic 147	--	BA	8986	Recombinant Protein
Nanog	hNanog.1	ICFC, WB	5769	Purified, Biotin, FITC
Notch-1	mN1A	ICFC, IHC, WB	5785	Purified, Biotin, PE
Oct3/4	EM92	ICFC, WB, IHC	5841	Purified, PE, Alexa Fluor® 488, Alexa Fluor® 647
SSEA-1	eBioMC-480	FC, IHC, IP	8813	Purified, Biotin, PE, Alexa Fluor® 488
SSEA-3	eBioMC-631	FC, IHC	8833	Purified, Biotin, PE, Alexa Fluor® 488
SSEA-4	eBioMC-813-70	FC, IHC	8843	Purified, Biotin, PE, Alexa Fluor® 488
Tra-1-60 (podocalyxin)	Tra-1-60	FC, WB, IHC, IP	8863	Purified, Biotin, PE
Tra-1-81 (podocalyxin)	Tra-1-81	FC, WB, IHC	8883	Purified, Biotin, PE

NEW Mouse Stem Cell Markers

Specificity	Clone	Applications	Cat. No.	Formats
2B4 (CD244, SLAMF4)	eBio244F4	FC, WB	2441	Purified, FITC, PE, Alexa Fluor® 647
AA4.1 (CD93, C1qRp)	AA4.1	FC, IHC	5892	Purified, Biotin, FITC, PE, APC, PE-Cy7
BP-1	6C3	FC, IHC, IP	5891	Purified, Biotin, FITC, PE
CD34	RAM34	FC, IHC/F, IHC/P	0341	Purified, FG Purified, Biotin, FITC, PE, Alexa Fluor® 647, Alexa Fluor® 700, Pacific Blue®
CD43	eBioR2/60	FC, BA, IP, WB	0431	Purified, FG Purified, Biotin, FITC, PE
CD48	HM48-1	FC, BA, IP, WB	0481	Purified, FG Purified, Biotin, FITC, PE, APC
CD90/Thy1	G7	FC, BA, IHC	0901	Purified, FG Purified
CD117/c-Kit	ACK2	FC, IHC/F, IP, WB	1172	Purified, FG Purified, PE, PE-Cy5, PE-Cy7, APC, APC-Alexa Fluor® 750, Alexa Fluor® 700
CD123	5B11	FC	1231	Purified, Biotin, FITC, PE, APC
CD133 (Prominin-1)	13A4	FC, IHC, IP, WB	1331	Purified, FG Purified, Biotin, FITC, PE, APC, FG Biotin, Alexa Fluor® 488
CD135/Flk-2	A2F10	FC, BA, IP	1351	Purified, FG Purified, Biotin, PE, PE-Cy5
CD202/Tie2	TEK4	FC	5987	Purified, FG Purified, Biotin, PE
CD309/Flk1	Avas12a1	FC, IHC, WB	5821	Purified, Biotin, PE, APC, Alexa Fluor® 700, Pacific Blue®
Eomes	21Mags8	ICFC, WB	4876	PE, Purified, Alexa Fluor 647
c-Met	eBioclone 7	FC	8854	Purified, FITC, PE
FGF-acidic	--	BA	8981	Recombinant Protein
FGF-basic	--	BA	8982	Recombinant Protein
gp130	KGP130	FC, WB	1302	Purified, Alexa Fluor 647
Nanog	eBioMLC-51	ICFC, WB	5761	Purified, Alexa Fluor® 488, Alexa Fluor® 647
Notch-1	mN1A	ICFC, IHC, WB	5785	Purified, Biotin, PE
Oct-3/4	EM92	ICFC, WB, IHC	5841	Purified, PE, Alexa Fluor® 488, Alexa Fluor® 647
Sca-1 (Ly6A/E)	D7	FC, IP, WB	5981	Purified, FG Purified, Biotin, FITC, PE, PE-Cy5, APC, PE-Cy7, PE-Cy5.5, PerCP-Cy5.5, Alexa Fluor® 700
SSEA-1	eBioMC-480	FC, IHC, IP	8813	Purified, Biotin, PE, Alexa Fluor® 488
SSEA-3	eBioMC-631	FC, IHC	8833	Purified, Biotin, PE, Alexa Fluor® 488
VE-Cadherin	BV13	FC, FA, WB, IHC/F, IP	1441	Purified, FG Purified, Alexa Fluor® 488, Alexa Fluor® 647

FC = Fluorescence staining followed by flow cytometric analysis, ICFC = Intracellular FC, IHC = Immunohistochemical staining, IHC/F = IHC of frozen tissue, IHC/P = IHC of paraffin embedded tissue, BA = Functional bioassays, IP = Immunoprecipitation, WB = Immunoblotting

* Alexa Fluor® and Pacific Blue® are registered trademarks of and licensed under patents assigned to Molecular Probes, Inc. for research use only.

